

U 96

U-BOAT

Pack 32

Assembly Instructions

Kit 125: Model stand (VI)

Kit 126: Model stand (VII)

Kit 127: Model stand (VIII)

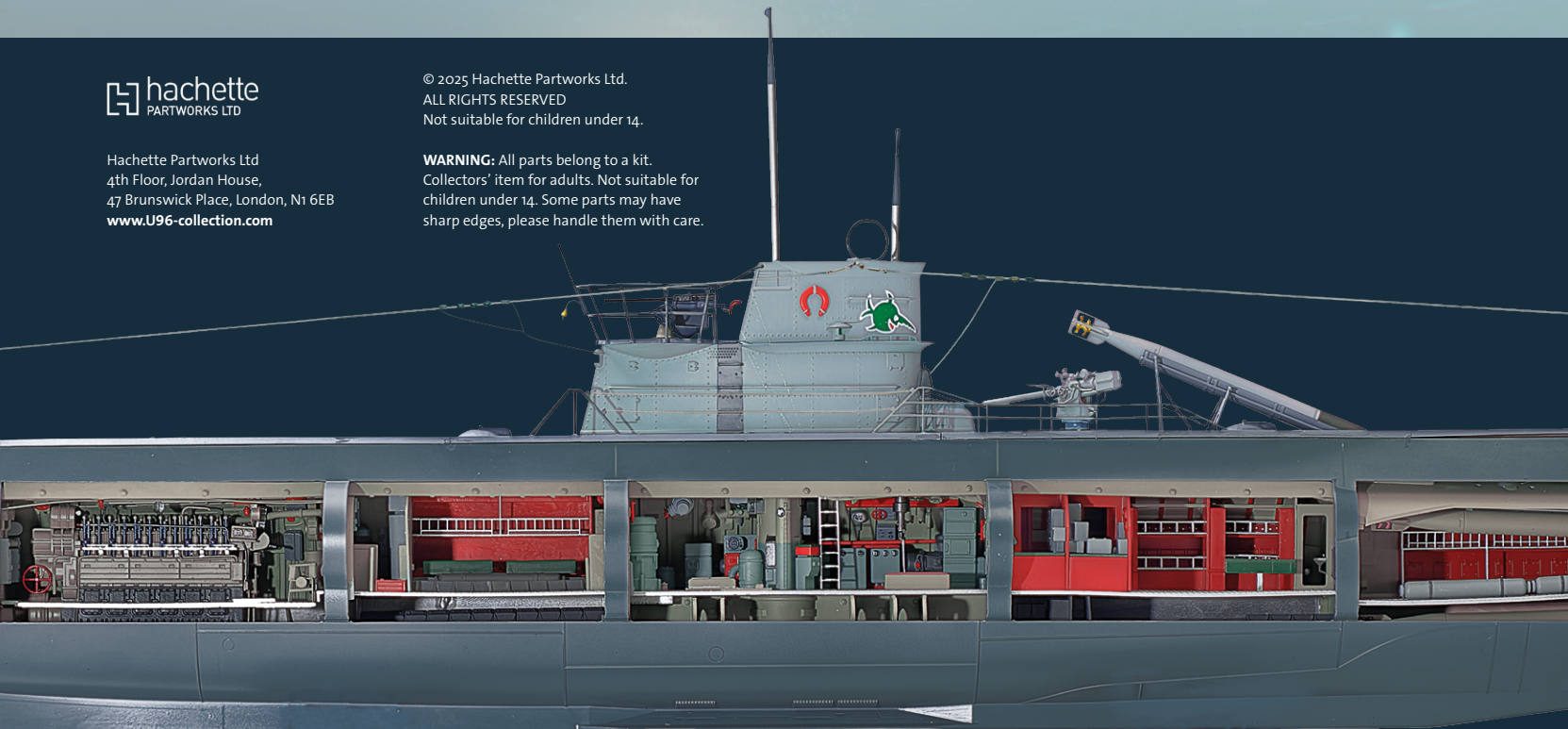
Kit 128: Model stand (IX)



Hachette Partworks Ltd
4th Floor, Jordan House,
47 Brunswick Place, London, N1 6EB
www.U96-collection.com

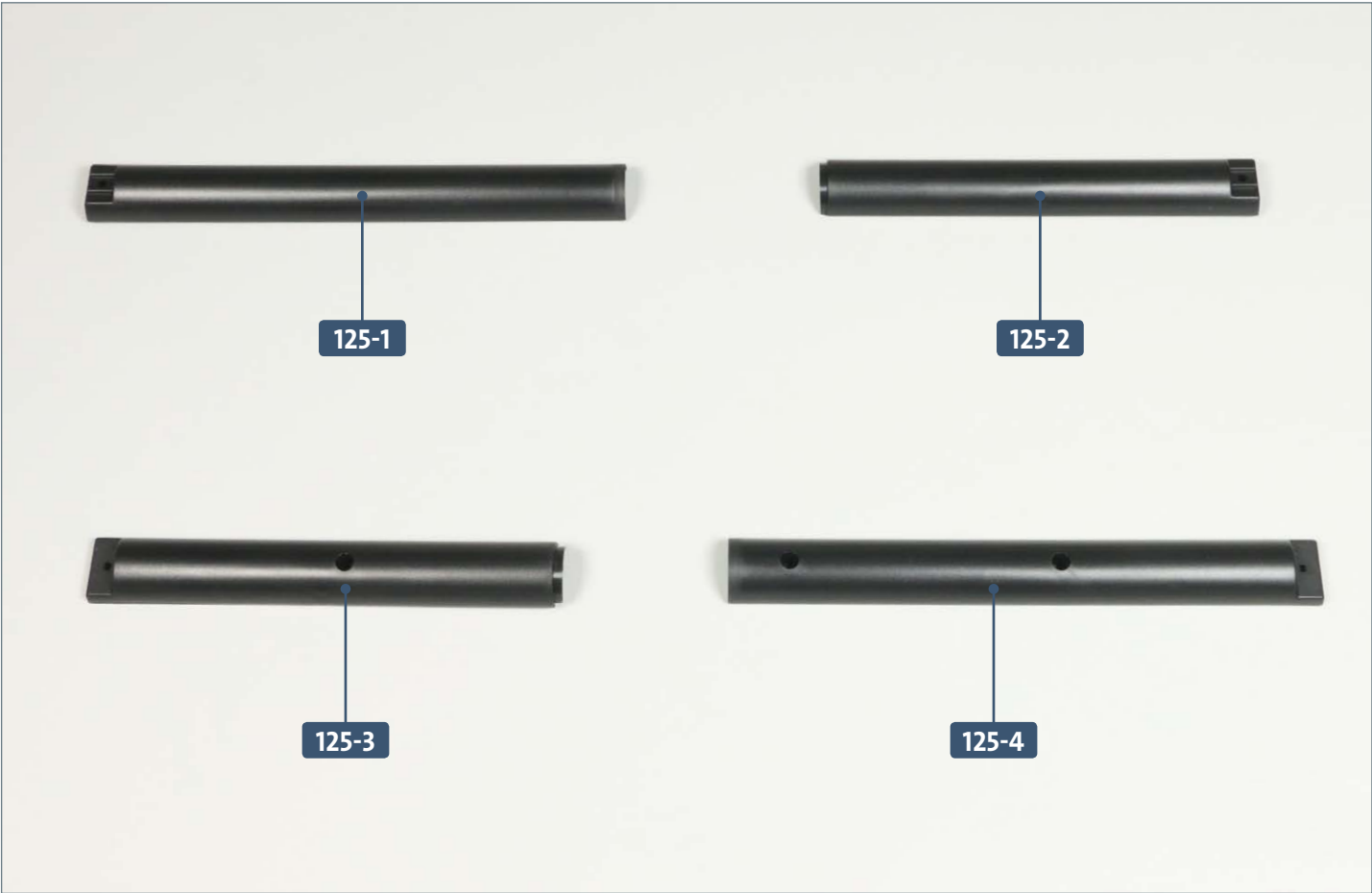
© 2025 Hachette Partworks Ltd.
ALL RIGHTS RESERVED
Not suitable for children under 14.

WARNING: All parts belong to a kit.
Collectors' item for adults. Not suitable for
children under 14. Some parts may have
sharp edges, please handle them with care.



Kit 125: Model stand (VI)

In this kit, the first longitudinal beam of the stand is assembled from four component parts then screwed to the forward and aft sections of the stand.



Parts reference list	
Part no.	Name
125-1	Long upper section of longitudinal beam
125-2	Short upper section of longitudinal beam
125-3	Short lower section of longitudinal beam
125-4	Long lower section of longitudinal beam

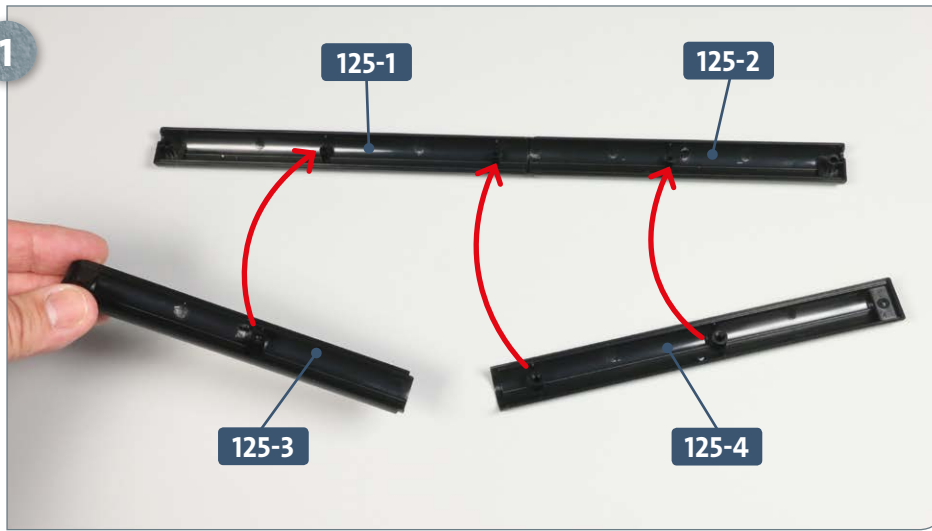


Screws		
Ref	No.	Dimensions
EP	3 + 1	2.3 x 6 mm (PB)
IP	2 + 1	2.3 x 16 mm (PB)

Kit 125: Model stand (VI)

STAGE 1 → Assembly and installation of the longitudinal beam

1



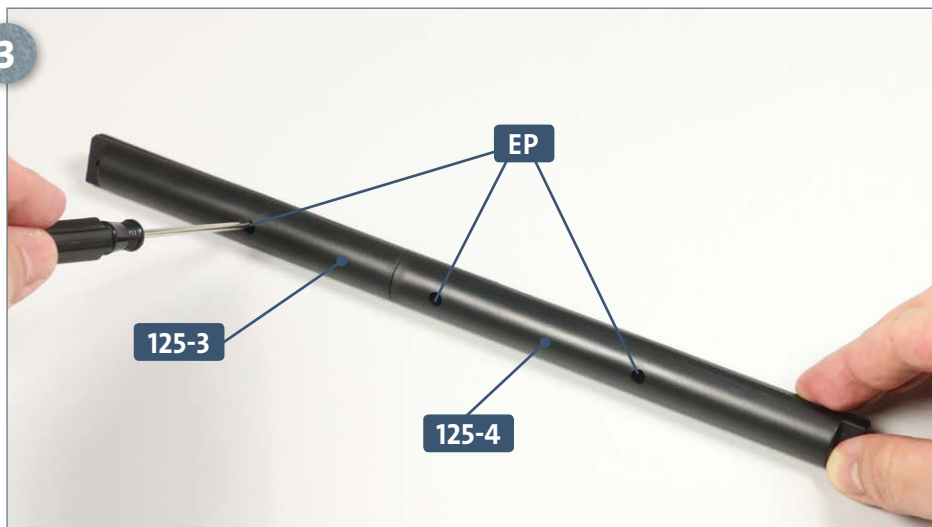
Place the two upper sections of the beam, **125-1** and **125-2**, next to each other, as pictured. Next, place the two lower sections, **125-3** and **125-4**, in front of them. Position the two lower sections over the upper sections as directed by the arrows: the two long sections overlap in the centre of the beam.

2



This photo shows the four sections of the beam, **125-1** to **125-4**, correctly assembled. Next, have ready three **EP** screws.

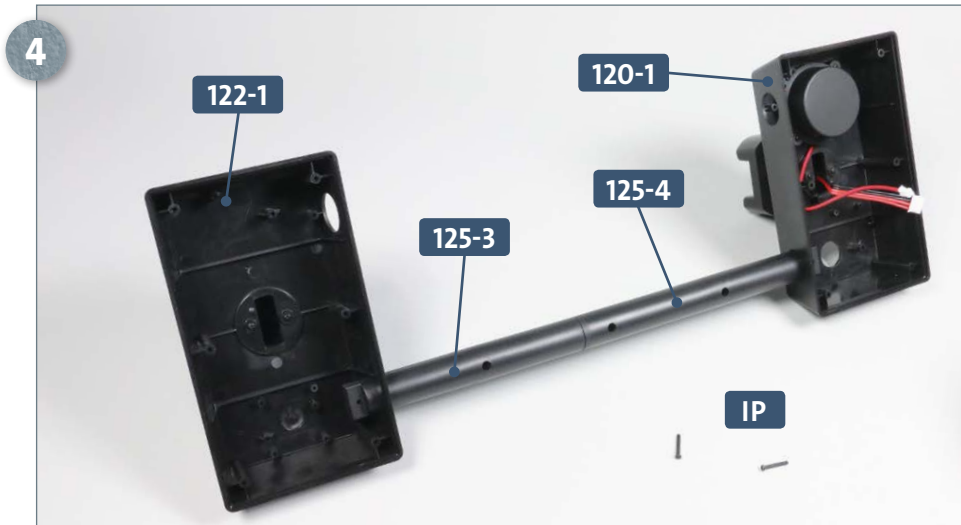
3



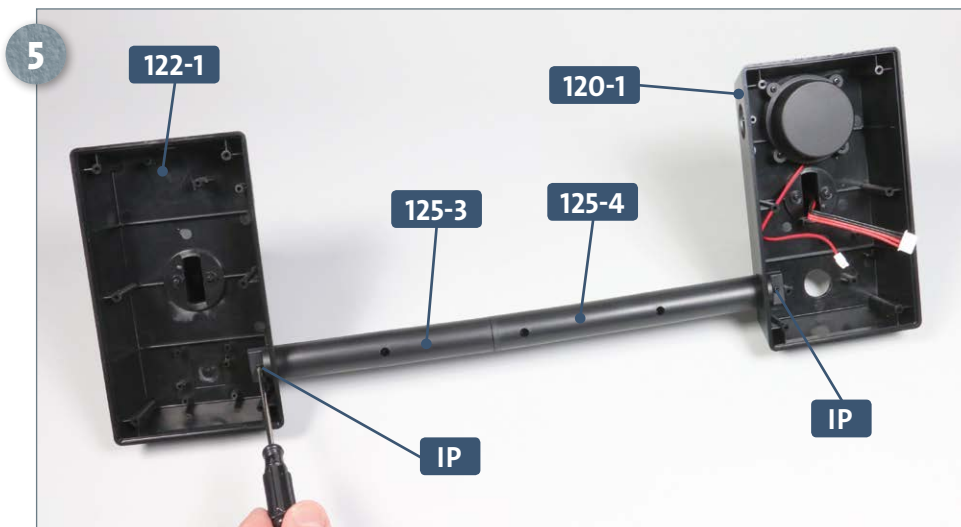
Join the four sections of the longitudinal beam together using the three **EP** screws through the holes of the two lower sections, **125-3** and **125-4**.

Kit 125: Model stand (VI)

Place the forward and aft sections of the stand, **122-1** and **120-1**, on your work surface, arranged and oriented as shown in the photograph. Fit the ends of the longitudinal beam into the holes at the side of the two stands so that the lower parts of the beam, **125-3** and **125-4**, face downwards. Have ready two **IP** screws.



Fix the longitudinal beam **125-3/125-4** to the forward and aft stands, **122-1** and **120-1**, using one **IP** screw into the holes at each end of the beam, as shown.



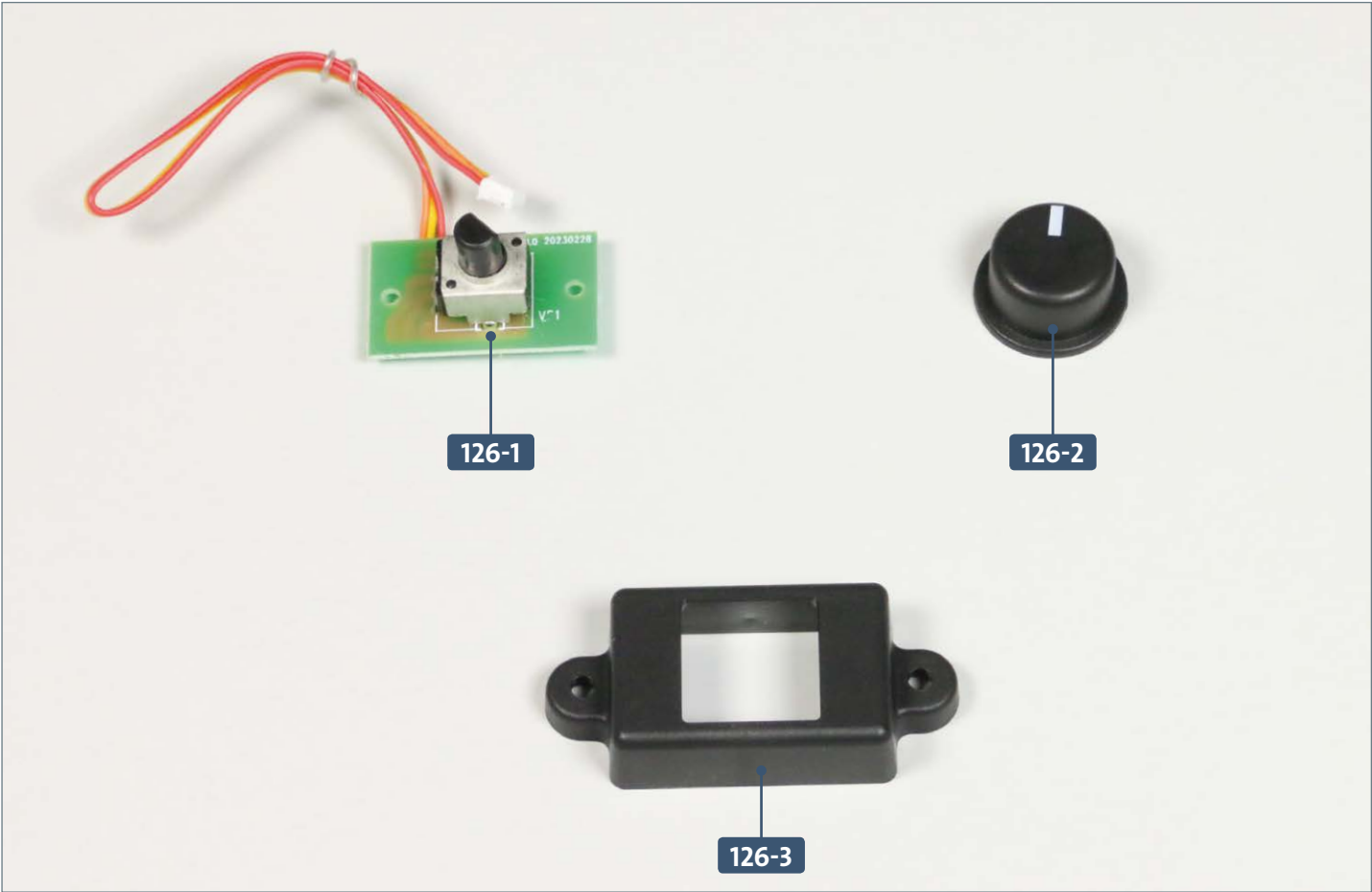
COMPLETED WORK



The first longitudinal beam has now been assembled and connected to the forward and aft sections of the stand.

Kit 126: Model stand (VII)

In this kit, the rotary controller for the stand is fitted with a control knob and mounting bracket before being attached to the aft section of the model stand.

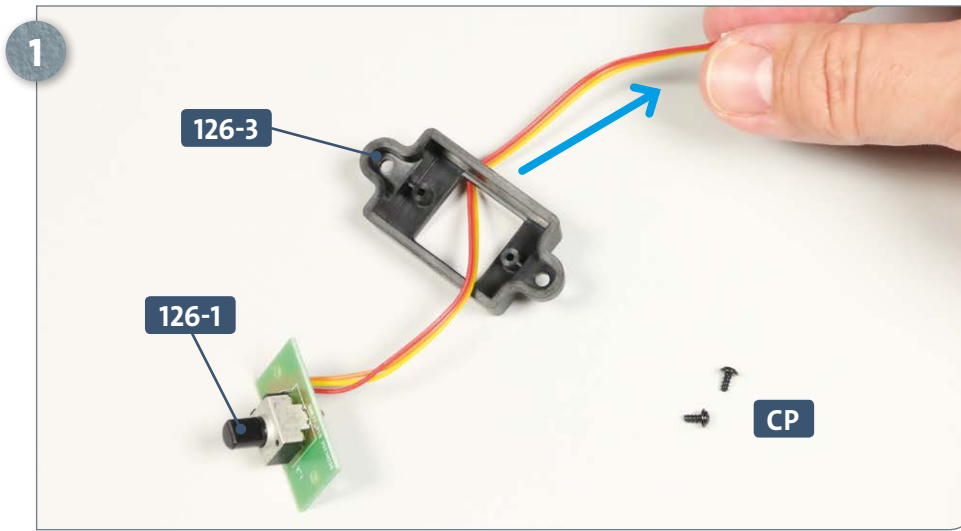


Parts reference list	
Part no.	Name
126-1	Circuit board with variable control (volume control)
126-2	Control knob
126-3	Mounting bracket

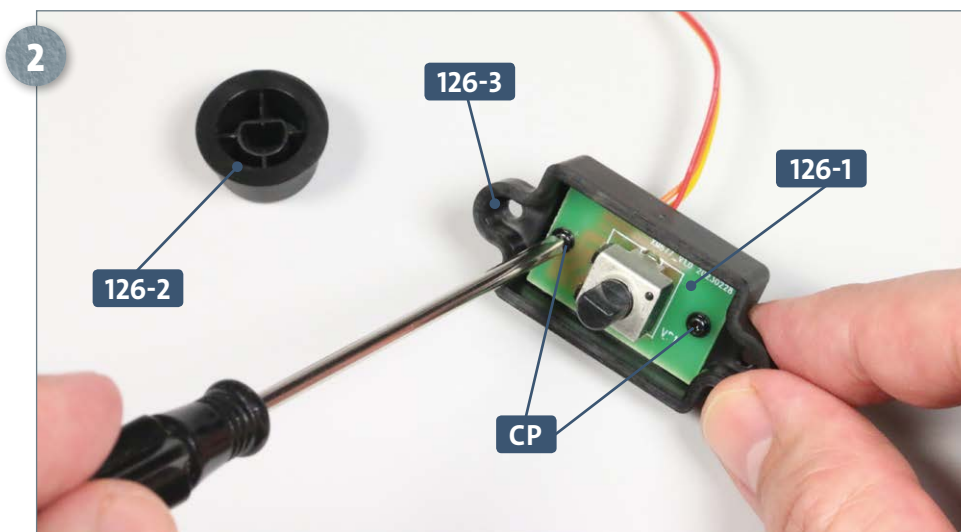


Screws		
Ref	No.	Dimensions
CP	2 + 1	2 x 4 mm (PWB)
EP	2 + 1	2.3 x 6 mm (PB)

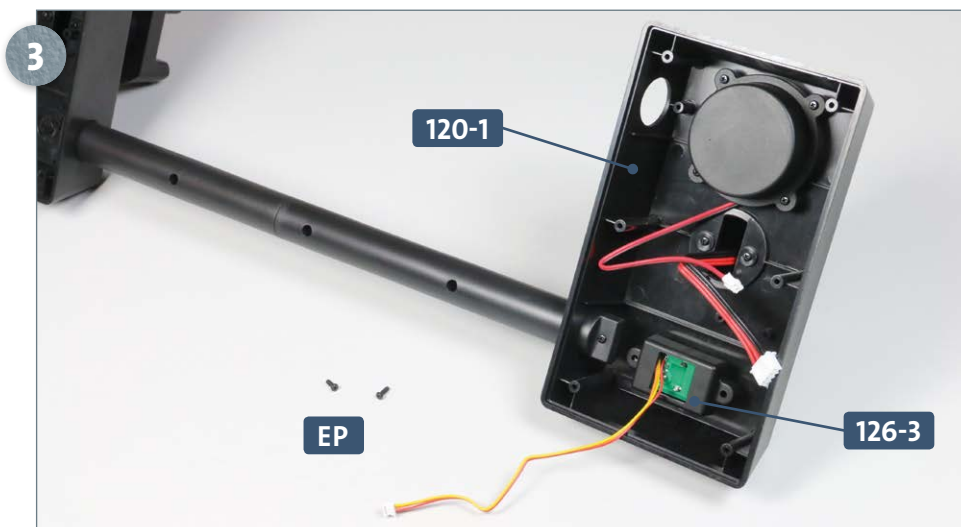
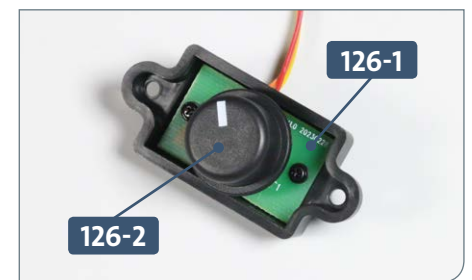
STAGE 1 → Building the volume control



Position the mounting bracket **126-3** as shown in the photo. Take the circuit board with the rotary control **126-1** and pass its cable through the opening in the bracket, as indicated by the arrow. Have ready two **CP** screws.

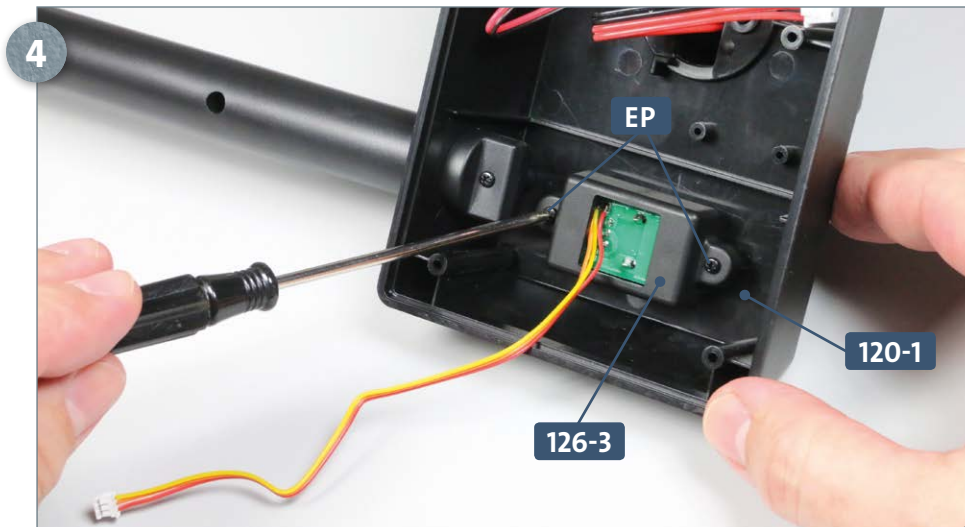


Attach the circuit board **126-1** to the bracket **126-3** using two **CP** screws. Take the control knob **126-2** and place it onto the rotary control (see inset photo below).



Turn the control knob assembly over and insert the bracket **126-3** into the aft section of the stand **120-1** from below, as pictured. Have ready two **EP** screws. Note that the cable from the circuit board **126-3** is to the left in the photograph.

Kit 126: Model stand (VII)



Use the two **EP** screws to fix the bracket **126-3** onto the stand **120-1**.



Turn the stand over and verify that the control knob **126-2** can be turned as shown in the image. If not, the assembly has been installed upside down.



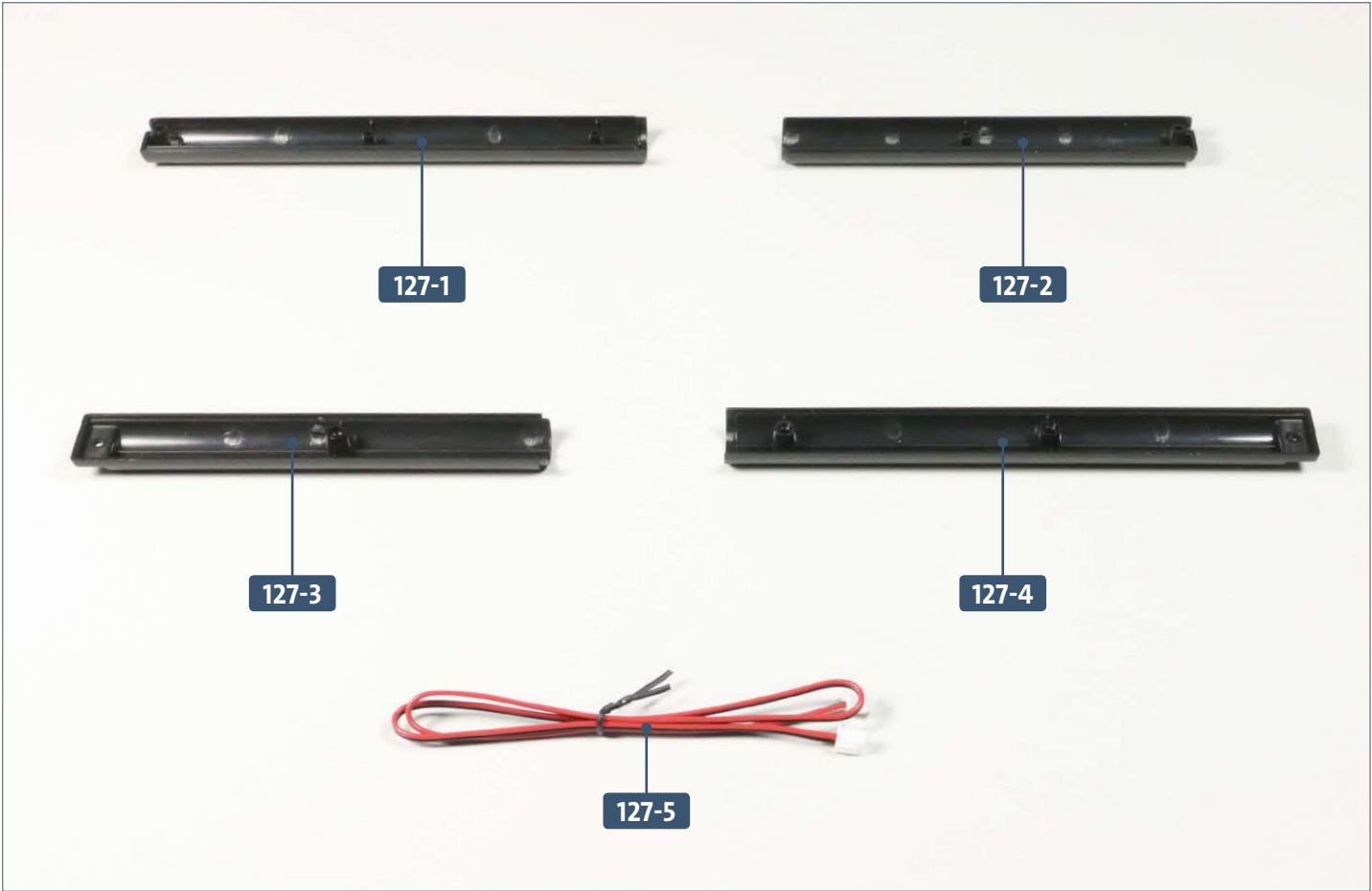
COMPLETED WORK



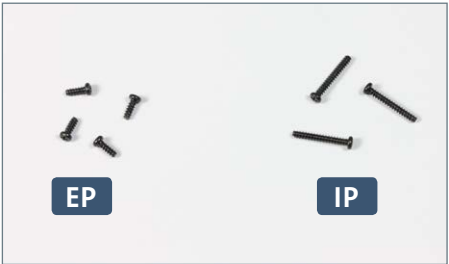
A rotary volume control has now been fitted to the aft part of the model stand.

Kit 127: Model stand (VIII)

In this kit, a cable is routed through the second longitudinal beam, before the four sections are fixed together and then joined to the forward and aft stand sections.

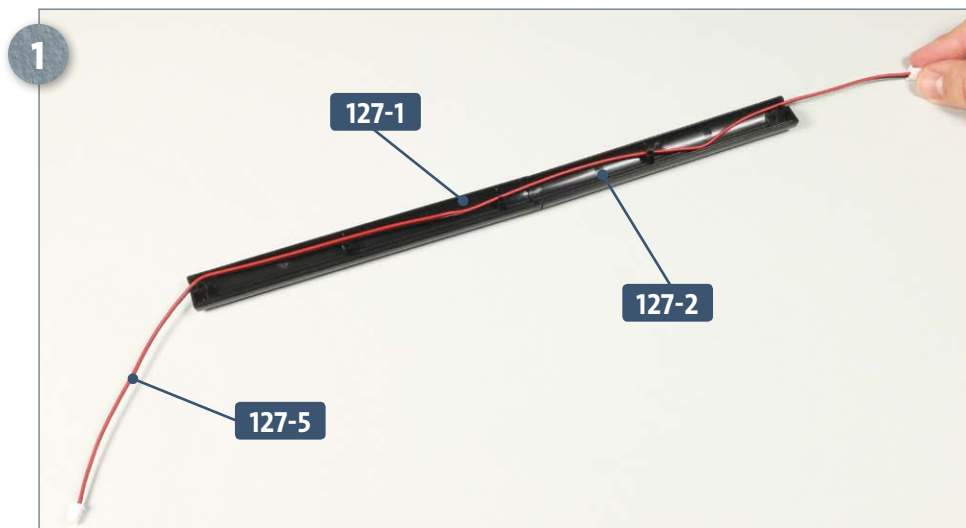


Parts reference list	
Part no.	Name
127-1	Long upper section of longitudinal beam
127-2	Short upper section of longitudinal beam
127-3	Short lower section of longitudinal beam
127-4	Long lower section of longitudinal beam
127-5	Cable

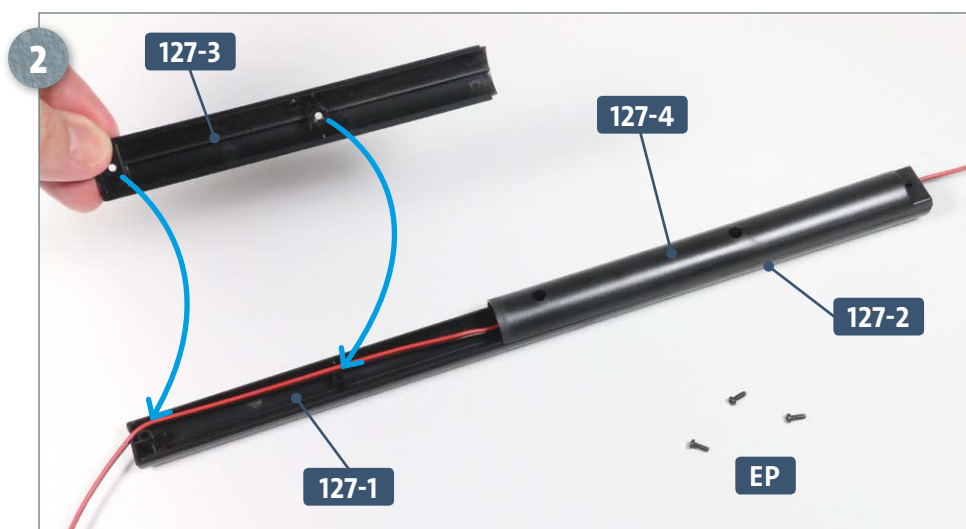


Screws		
Ref	No.	Dimensions
EP	3 + 1	2.3 x 6 mm (PB)
IP	2 + 1	2.3 x 16 mm (PB)

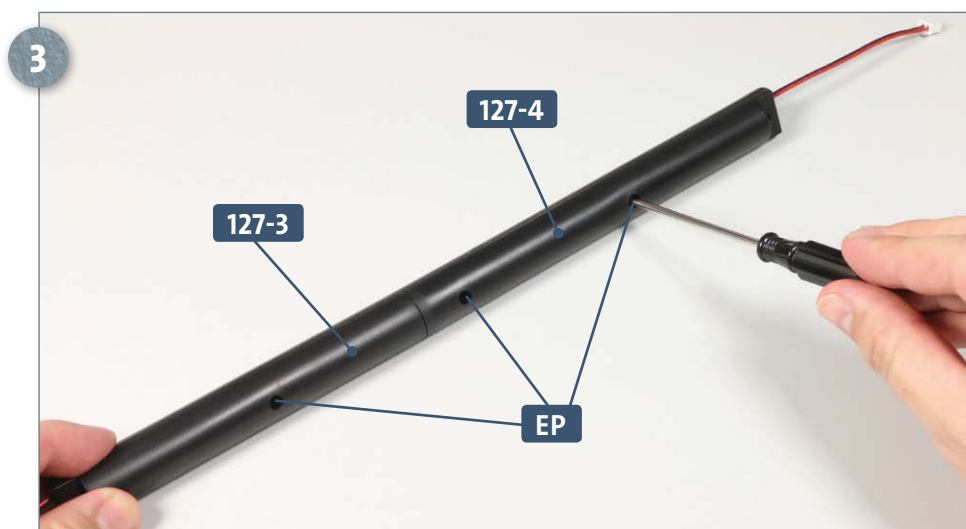
STAGE 1 → Assembly and installation of second longitudinal beam



Place the two upper sections of the beam, **127-1** and **127-2**, together as shown, left. Lay the cable **127-5** along the length of both sections, making sure that it is routed behind the raised screw sockets.

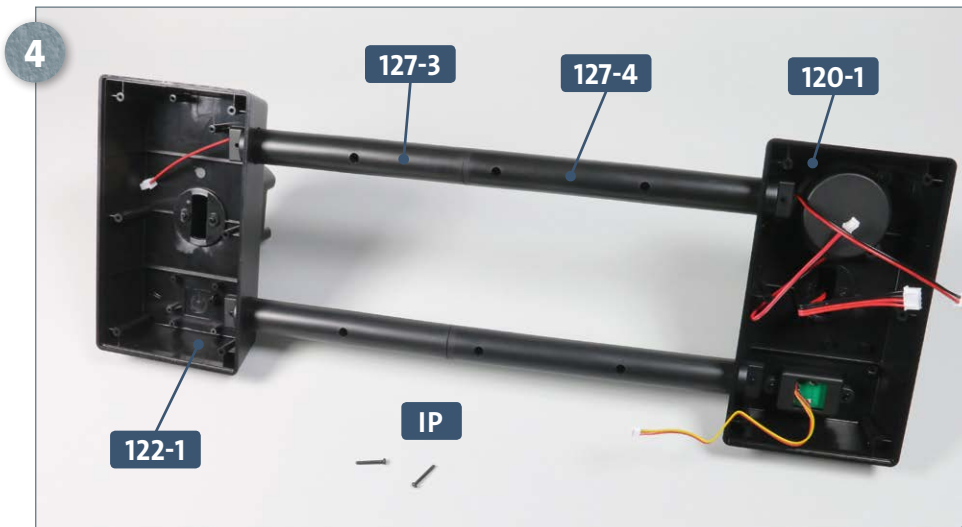


Fit the two lower sections **127-3** and **127-4** onto the upper sections **127-1** and **127-2**: the two longer sections, **127-1** and **127-4**, overlap in the centre of the beam. Have ready three **EP** screws.

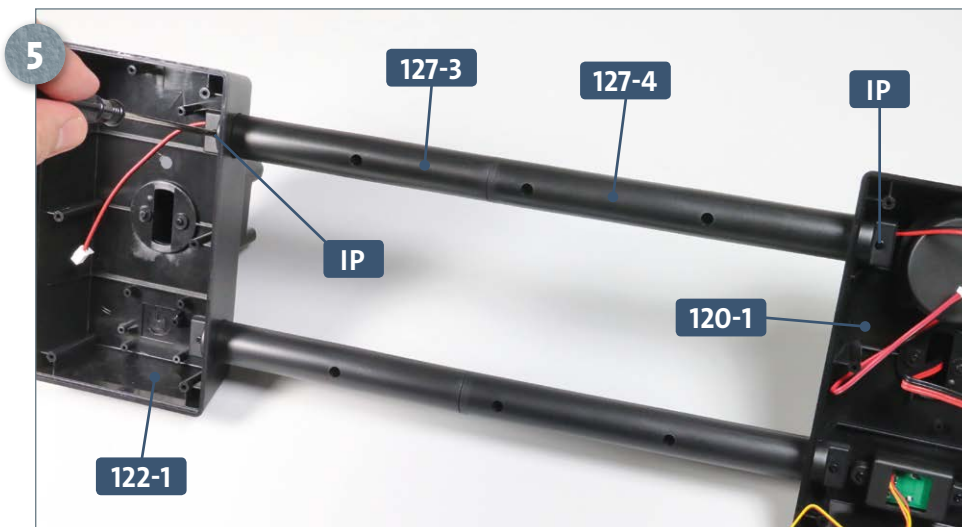


Fasten the four sections of the beam together by screwing the three **EP** screws into the holes in the lower parts, **127-3** and **127-4**, as shown.

Kit 127: Model stand (VIII)



Place the stand assembly, which you worked on in kit 126, on your work surface. Fit the second longitudinal beam into the side holes of the forward and aft stand sections **122-1** and **120-1**, with the lower sections **127-3** and **127-4** facing downwards. Have ready two **IP** screws.



Fix the longitudinal beam **127-3/127-4** in place using one **IP** screw at either end, as pictured.

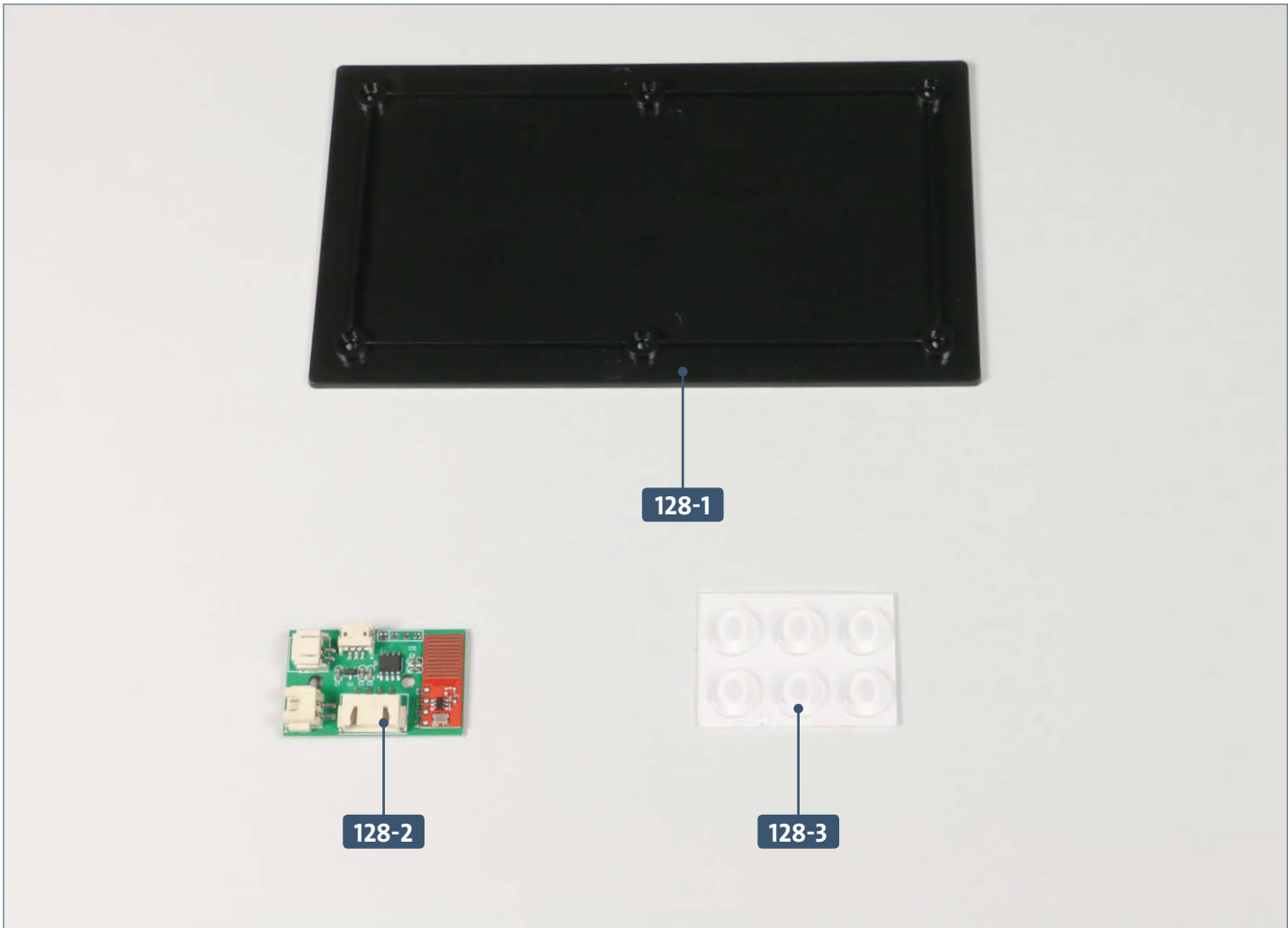
COMPLETED WORK



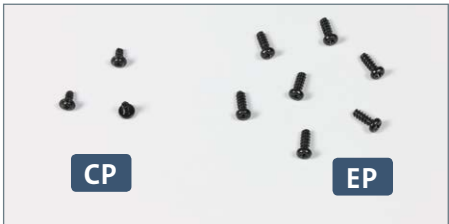
The second longitudinal beam has now been added to the model stand.

Kit 128: Model stand (IX)

In this kit, the cables in the aft section of the stand are connected to the circuit board before a cover is fitted to enclose them.



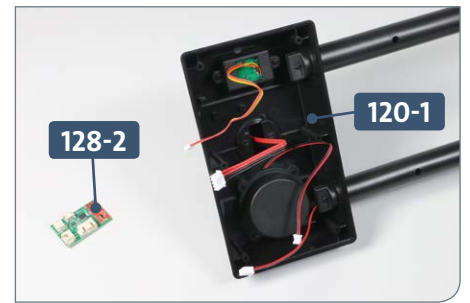
Parts reference list	
Part no.	Name
128-1	Base of aft stand section
128-2	Circuit board
128-3	PVC feet



Screws		
Ref	No.	Dimensions
CP	2 + 1	2 x 4 mm
EP	6 + 1	2.3 x 6 mm

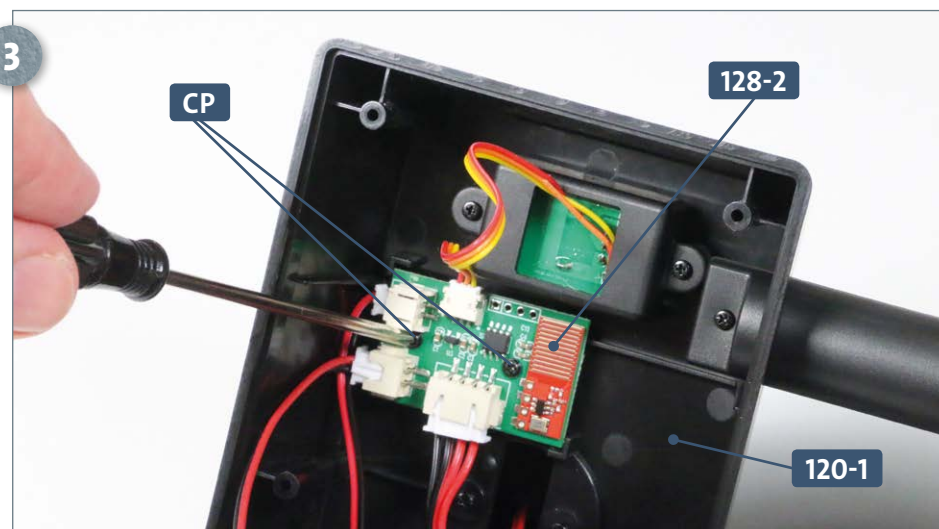
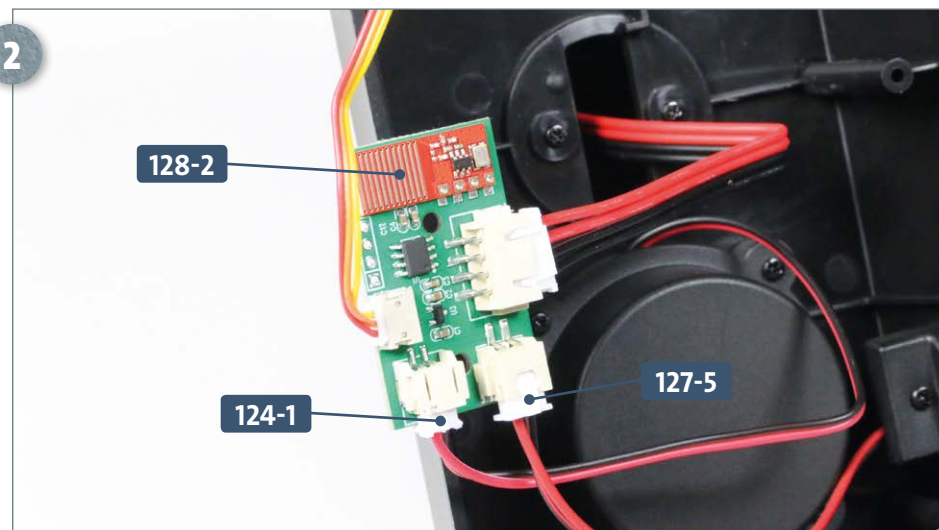
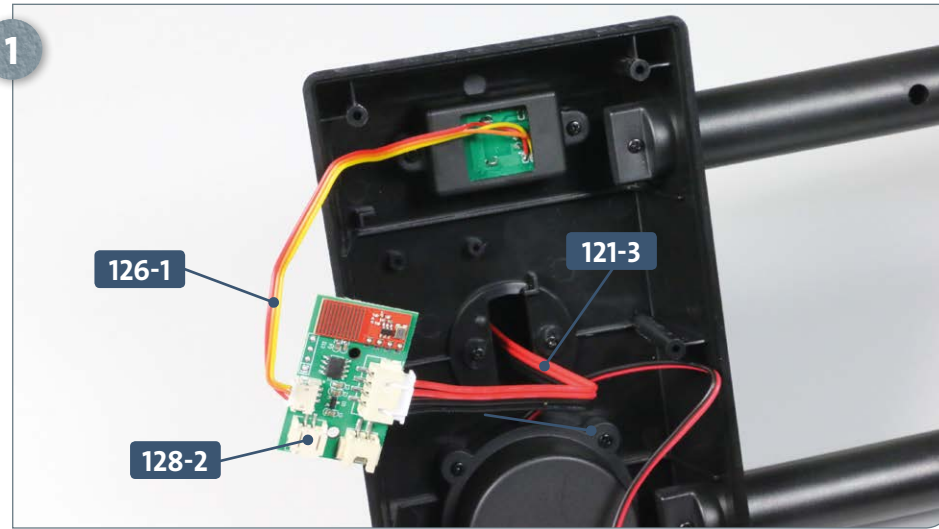
STAGE 1 → Work on the aft section of the stand

Place the circuit board **128-2** next to the aft stand section **120-1** (see inset photo below). Plug the connector for the contact cable **121-3** and the one for the volume control cable **126-1** into the corresponding sockets on the circuit board **128-2**, as pictured.

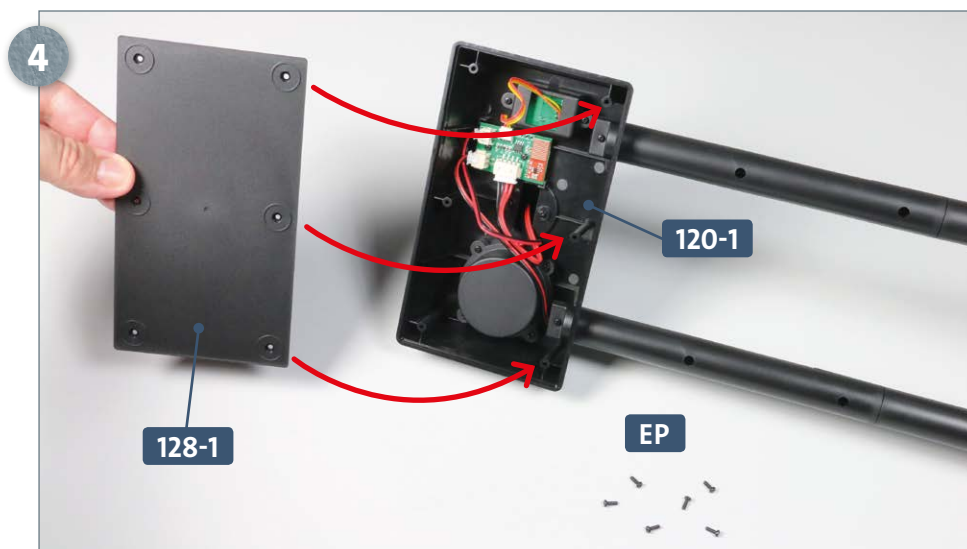


Insert the connector for the speaker cable **124-1** and cable **127-5** into the other two sockets, as pictured.

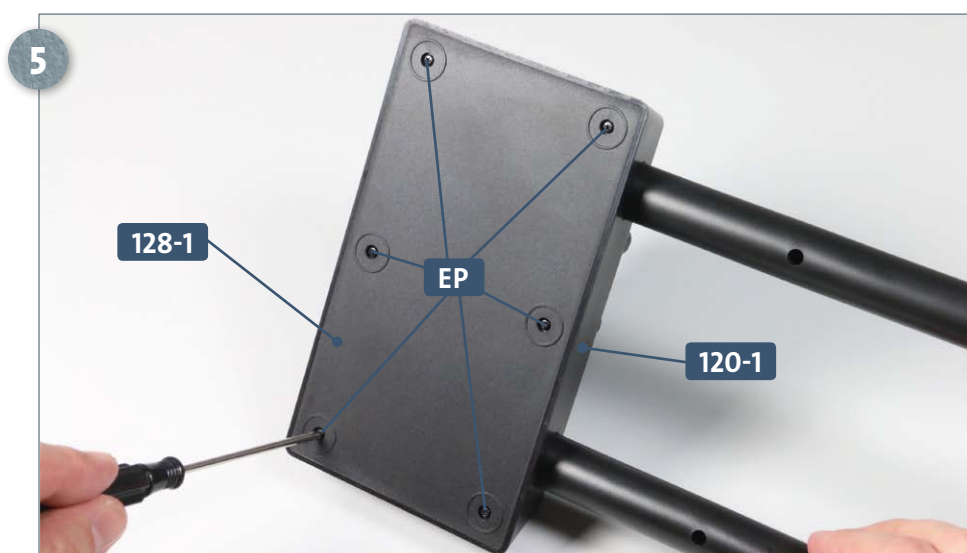
Fit the circuit board **128-2**, oriented as pictured, onto the two raised screw sockets on the underside of the aft stand **120-1** and fix in place using two **CP** screws.



Kit 128: Model stand (IX)



Have ready six **EP** screws. After making sure that all of the cables are firmly inserted, take the base **128-1** and place it over the opening in the bottom of the aft stand **120-1**, as indicated by the arrows.



Attach the base **128-1** to the bottom of the stand **120-1** using the six **EP** screws. Fit one of the PVC feet **128-3** over each of the screws, as shown in the inset photo below. You may wish to wait until the model has been fully tested before fitting the PVC feet.



COMPLETED WORK



The cables in the aft section of the model stand have now been connected to the circuit board and the base has been fitted to the underside.