

U 96

U-BOAT

Pack 31

Assembly Instructions

Kit 121: **Model stand (II)**

Kit 122: **Model stand (III)**

Kit 123: **Model stand (IV)**

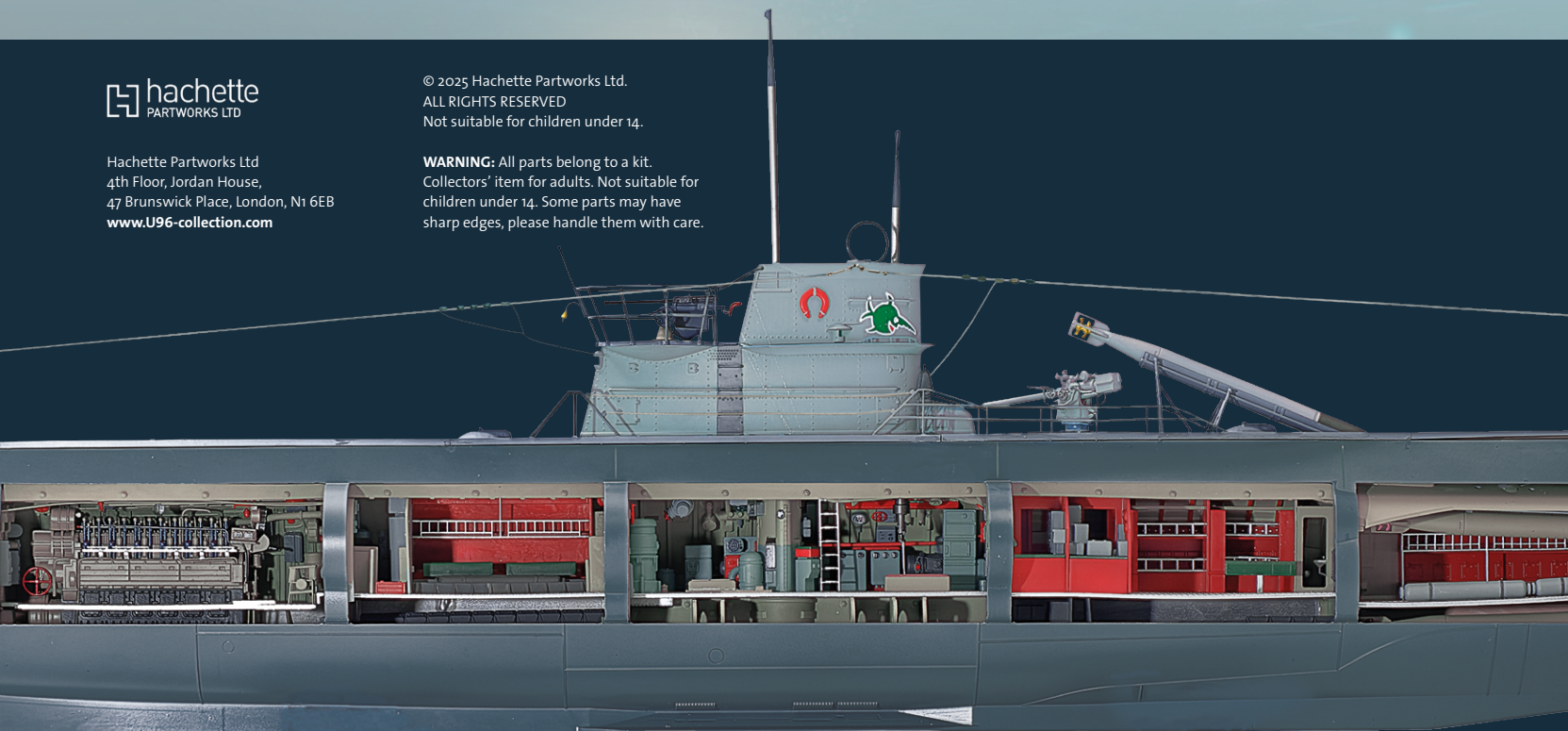
Kit 124: **Model stand (V)**



Hachette Partworks Ltd
4th Floor, Jordan House,
47 Brunswick Place, London, N1 6EB
www.U96-collection.com

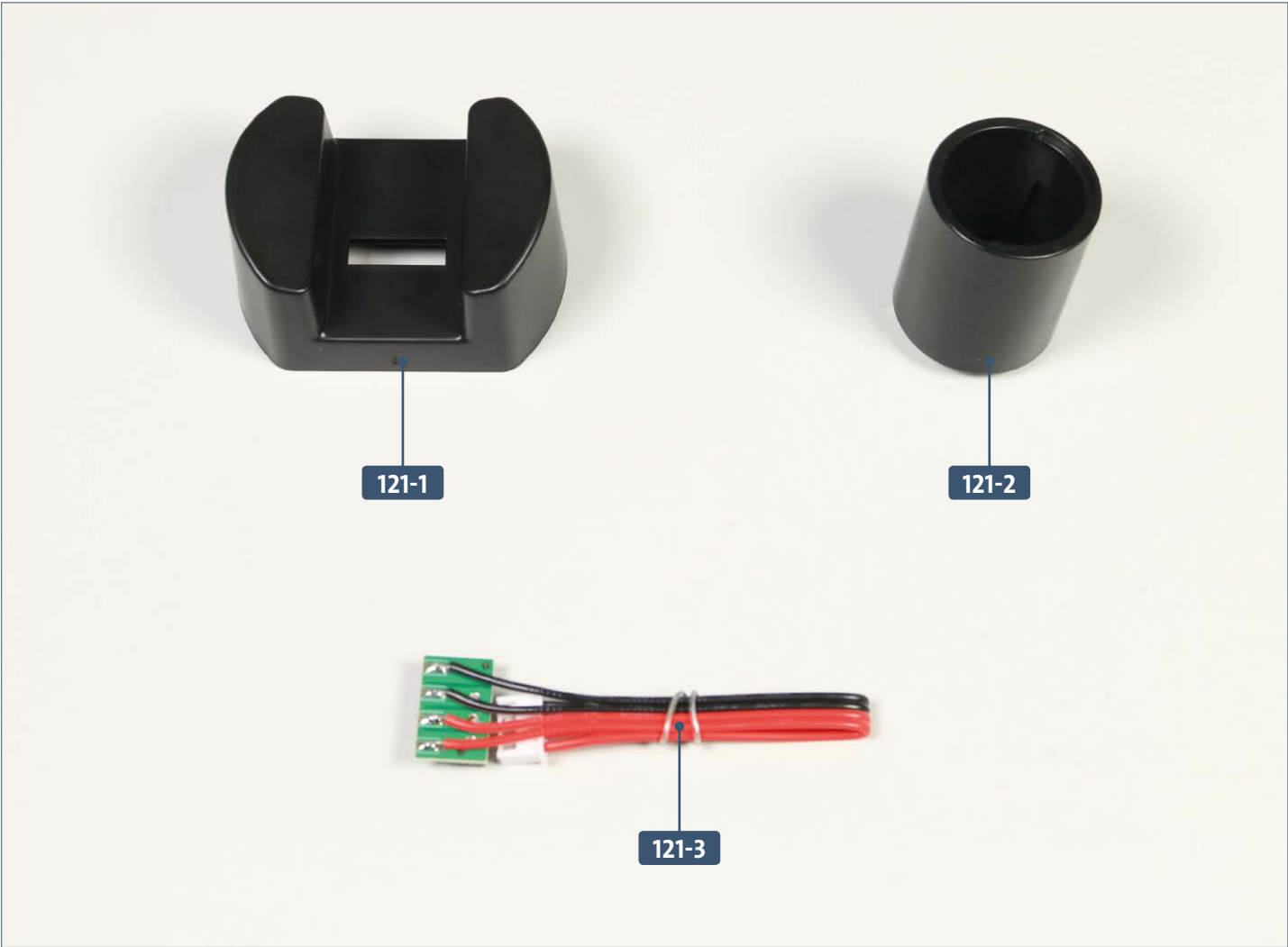
© 2025 Hachette Partworks Ltd.
ALL RIGHTS RESERVED
Not suitable for children under 14.

WARNING: All parts belong to a kit.
Collectors' item for adults. Not suitable for
children under 14. Some parts may have
sharp edges, please handle them with care.



Kit 121: Model stand (II)

In this kit, the assembly of the stand continues with the aft bracket, which is fitted with a contact cable, connected to the support column and then attached to the main body of the aft stand.



Parts reference list	
Part no.	Name
121-1	Aft bracket
121-2	Support column
121-3	Contact cable



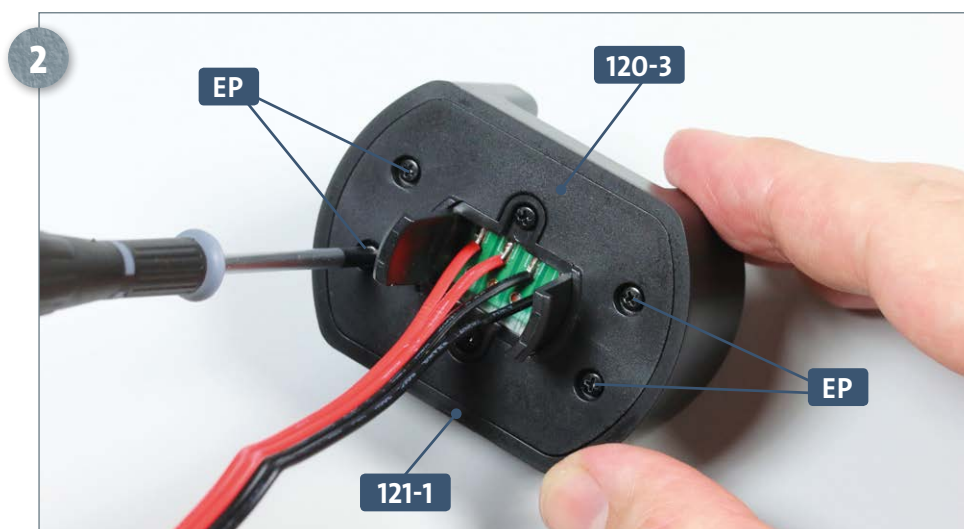
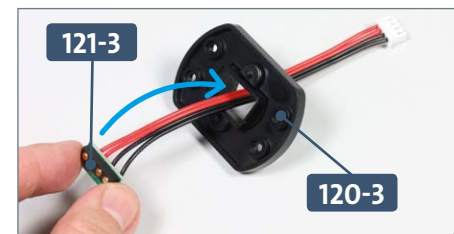
Screws		
Ref	No.	Dimensions
EP	6 + 1	2.3 x 6 mm

Kit 121: Model stand (II)

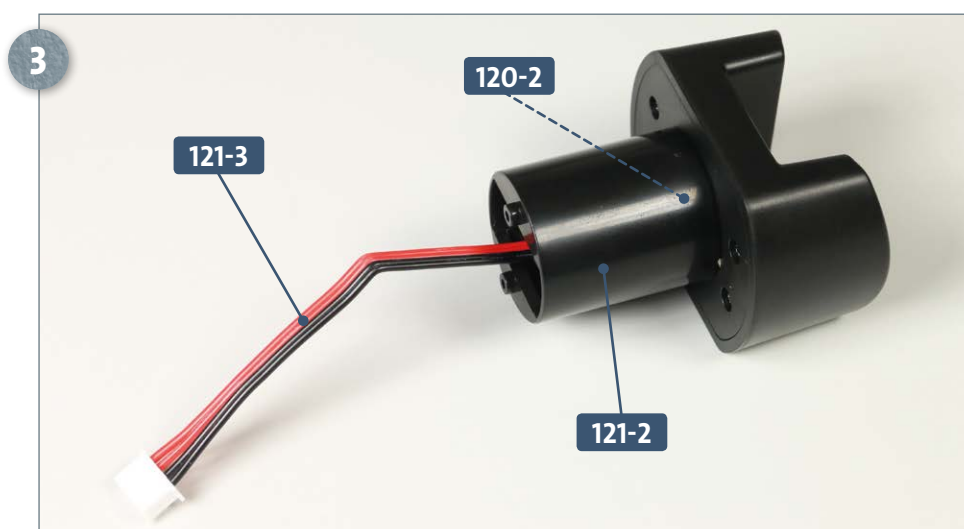
STAGE 1 → Attaching the bracket to the main body of the stand



Take the contact cable **121-3** and thread it through the central opening in the bottom of the bracket **120-3**, which was supplied in the previous kit (see inset photo). The main photo shows the final position of the contact cable **121-3** before it is fitted onto bracket **121-1**. Hold the cable in place while fitting the bottom of bracket **120-3** onto bracket **121-1** from below, as pictured.



The base of **120-3** with the contact cable attached sits on **121-1** and is fixed in place with four **EP** screws.

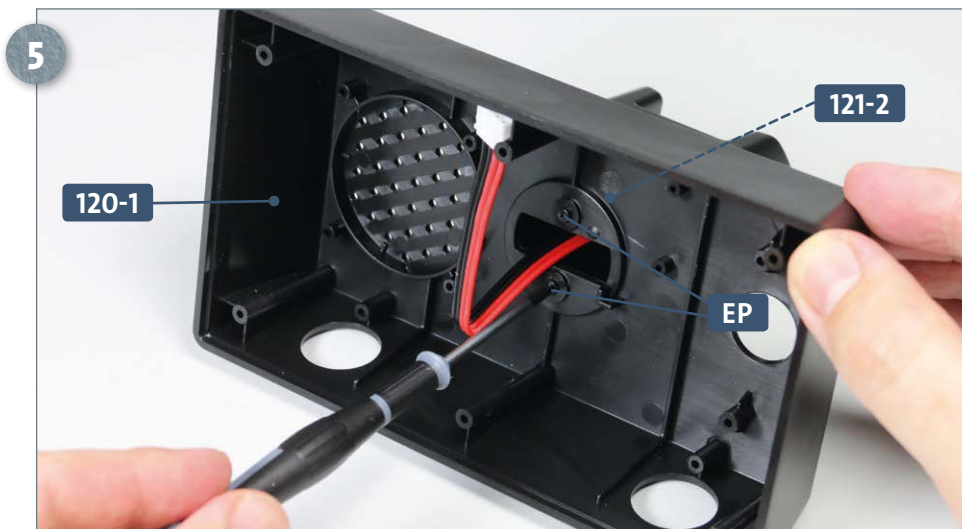


Fit the support column **121-2** over the free end of the contact cable **121-3** and attach it to the bracket assembly by push-fitting it onto the two connecting tabs of **120-2**.

Kit 121: Model stand (II)



Feed the contact cable **121-3** through the rectangular opening in the body of the aft stand **120-1** (see inset photo). Place the support column **121-2** on the stand. Make sure that the opening for the contacts (see arrow) is not in the centre of the bracket, but aligned as shown in the photo.



Holding the assembly in place on the body of the aft stand, fix the support column **121-2** to the stand **120-1** from below with two **EP** screws, as shown.

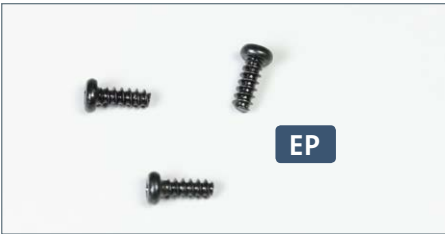
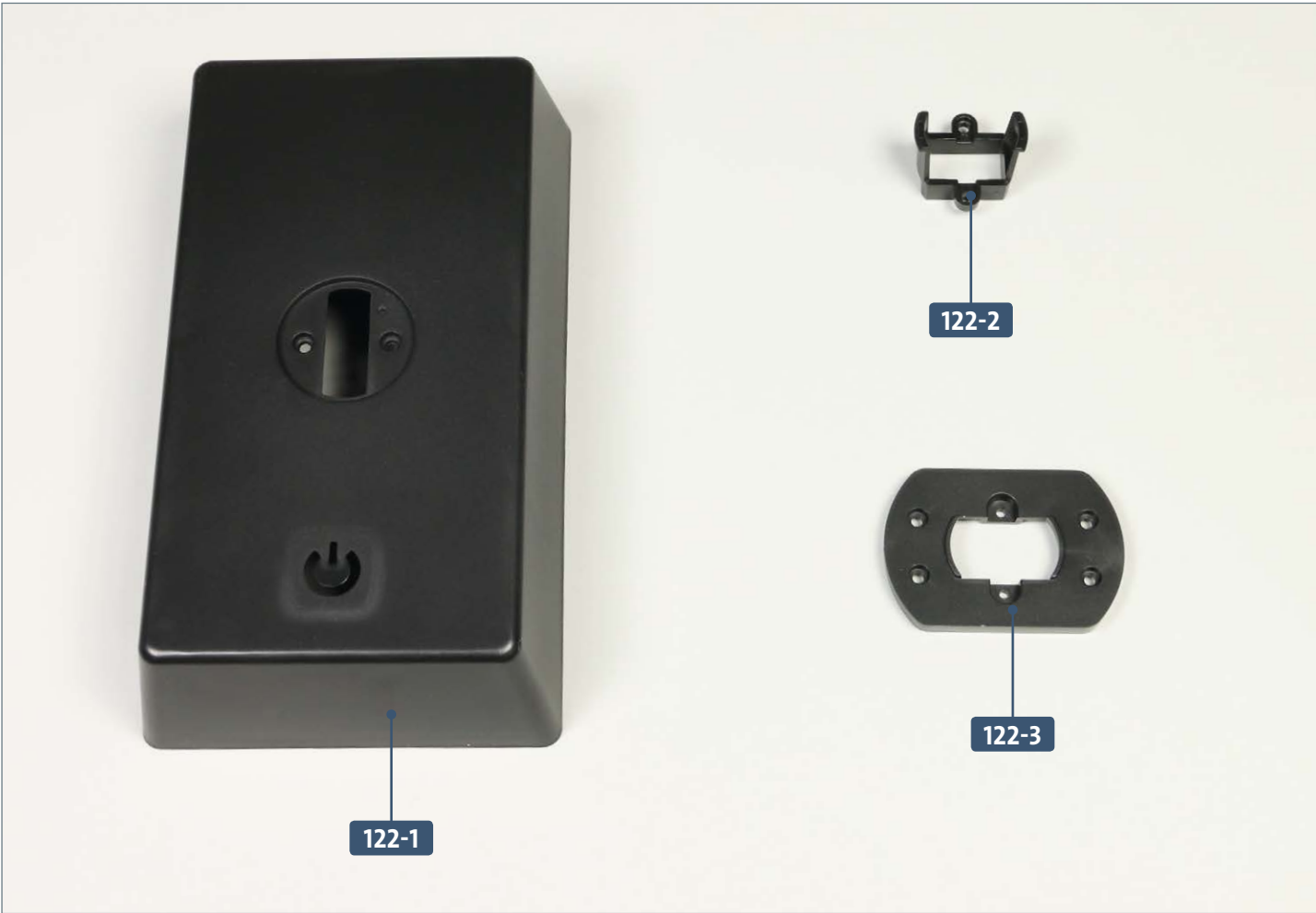
COMPLETED WORK



The bracket with the contact cable has now been attached to the aft stand.

Kit 122: Model stand (III)

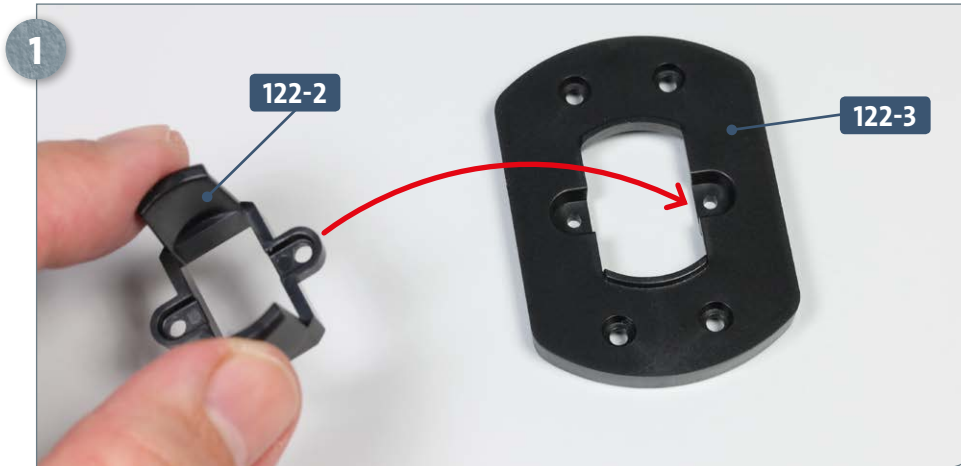
In this kit, the main body of the forward stand is supplied, along with a connector and bracket, which you will attach to one another.



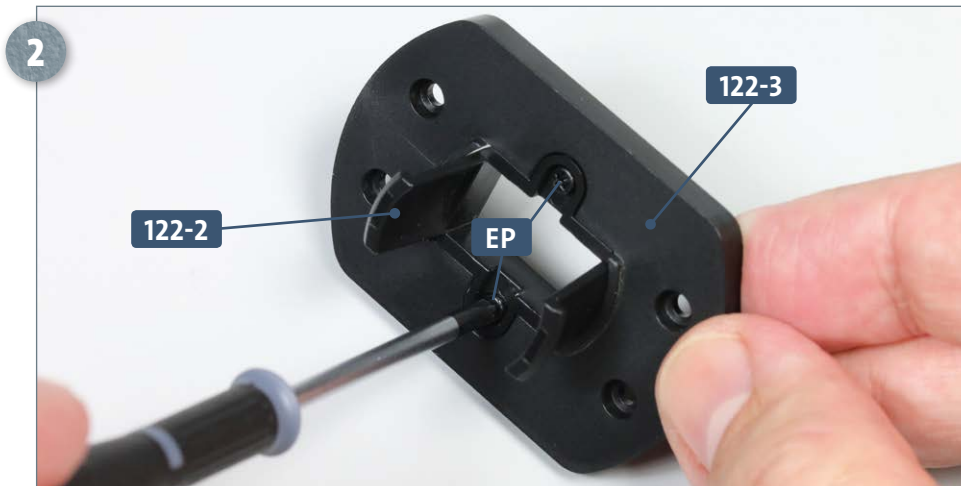
Parts reference list	
Part no.	Name
122-1	Forward stand
122-2	Connector
122-3	Base of forward bracket

Screws		
Ref	No.	Dimensions
EP	2 + 1	2.3 x 6 mm

STAGE 1 → Attaching the connector



Place the lower half of the front bracket **122-3** on your work surface. Take the connector **122-2** and fit the two side tabs into the recesses of the bracket, as indicated by the arrow.



Fix the connector **122-2** to the bracket part **122-3** using two **EP** screws.

COMPLETED WORK



The connector is now attached to the bracket. Work on the forward stand continues in the next kit.

Kit 123: Model stand (IV)

In this kit, work continues on the forward stand, with the assembly of the forward bracket and connection to a support column, before the assembly is attached to the main body of the stand.



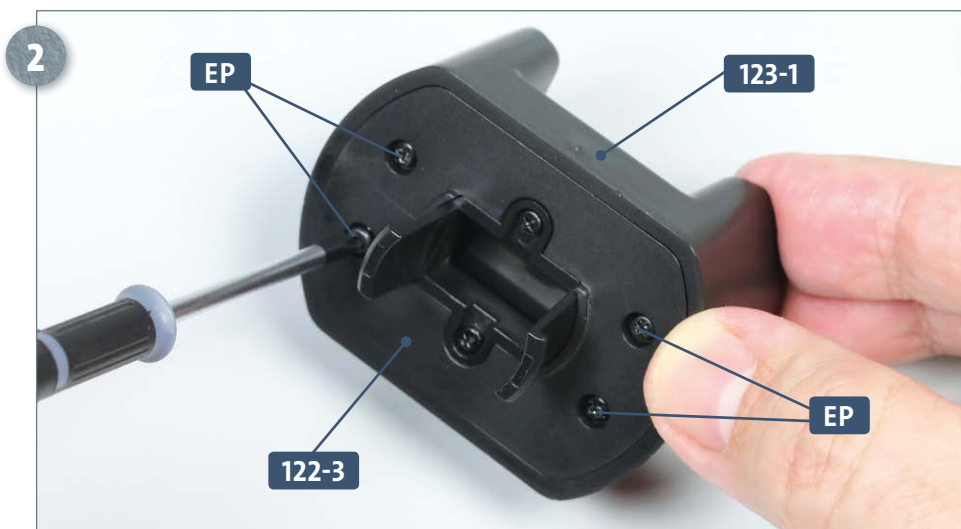
Parts reference list	
Part no.	Name
123-1	Forward bracket
123-2	Support column

Screws		
Ref	No.	Dimensions
EP	6 + 1	2.3 x 6 mm

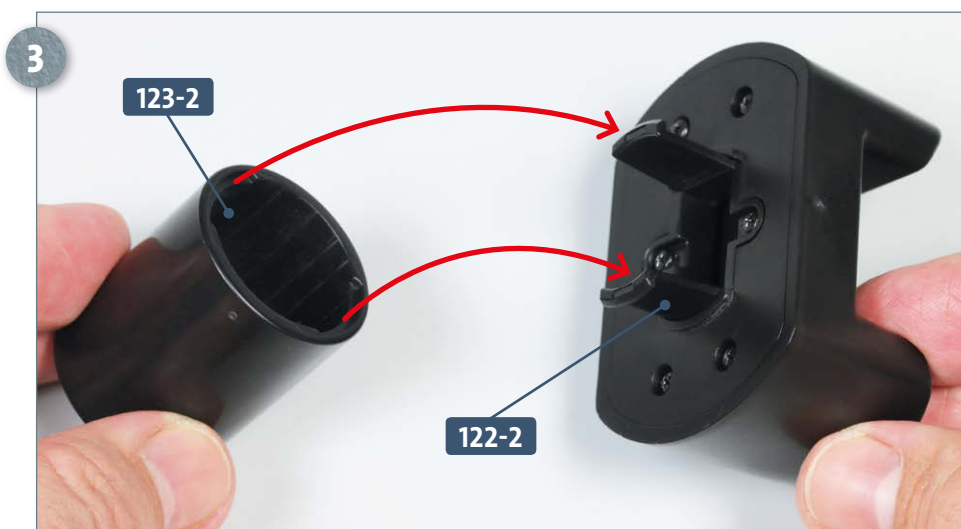
STAGE 1 → Attaching the bracket to the main body of the stand



Take the lower part of the forward bracket **122-3** and fit it onto the upper part **123-1**, as indicated by the arrows.



Fix in place using four **EP** screws.

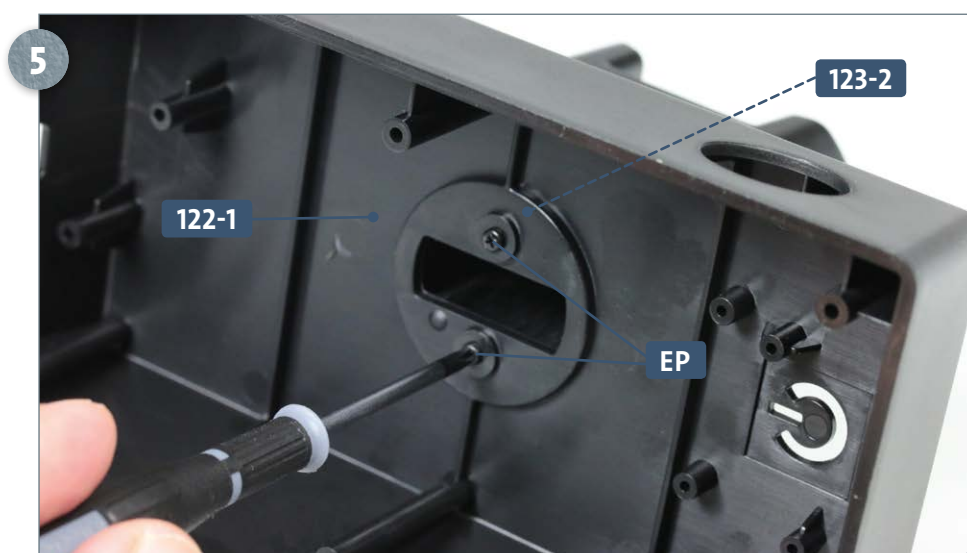


Take the support column **123-2** and attach it to the bracket assembly by clicking it in place over the two tabs of **122-2**.

Kit 123: Model stand (IV)



Fit the support column **123-2** onto the main body of the forward stand **122-1**. Make sure that the arrow embossed into the bracket **123-1** (circled) points in the direction shown in the photo.



Hold the bracket assembly in position while you fix the support column **123-2** to the forward stand **122-1** from below with two EP screws.

COMPLETED WORK



The bracket is now attached to the forward stand.

Kit 124: Model stand (V)

In this kit, assembly of the stand continues. The speaker is installed in the aft section of the stand and secured in place with a bracket.



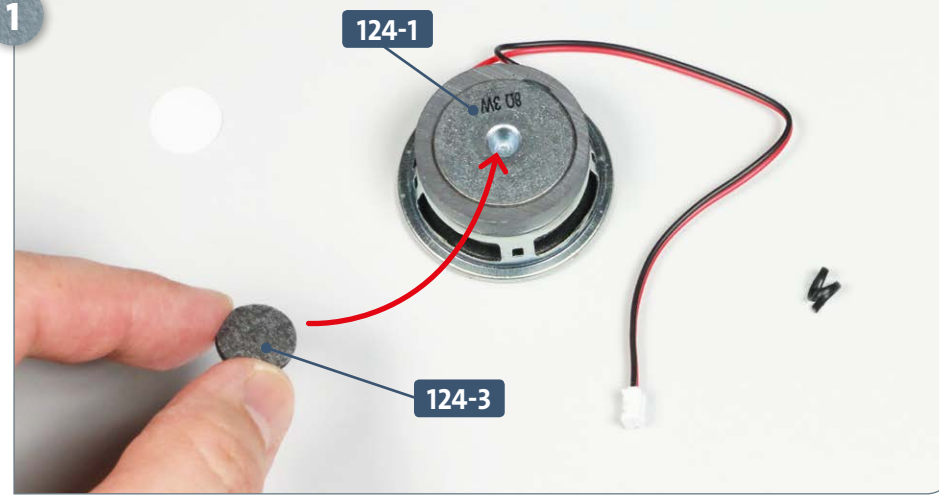
Parts reference list	
Part no.	Name
124-1	Speaker
124-2	Bracket
124-3	Pad



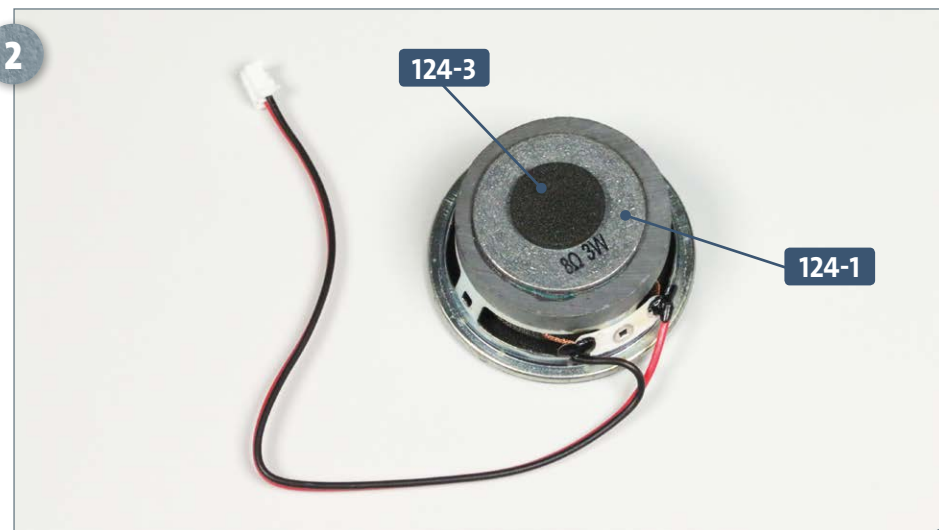
Screws		
Ref	No.	Dimensions
EP	4 + 1	2.3 x 6 mm (PB)

Kit 124: Model stand (V)

STAGE 1 → Fitting the speaker



Take the speaker **124-1** and remove the tie from the cable. Remove the backing from the pad **124-3** and fit it onto the speaker, as indicated. See also the next step.

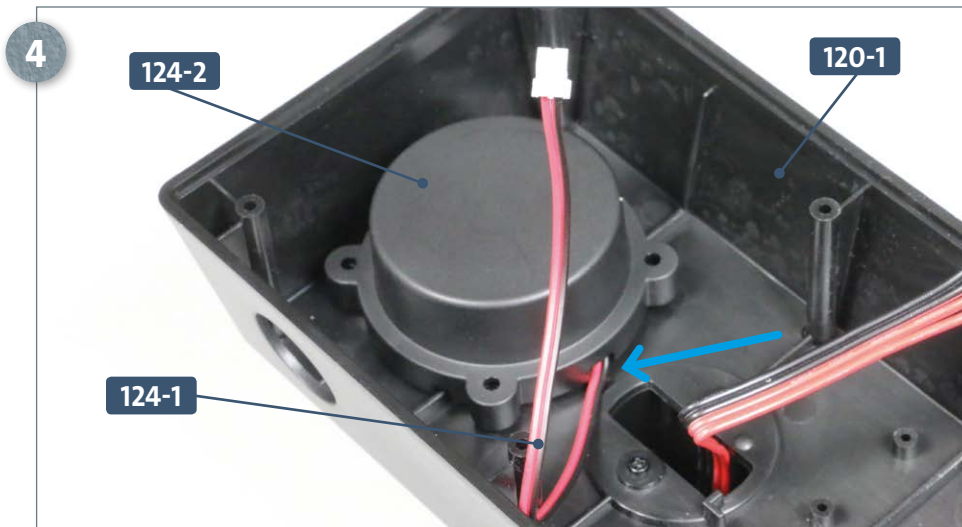


Stick the pad **124-3** centrally to the back of the speaker **124-1**.

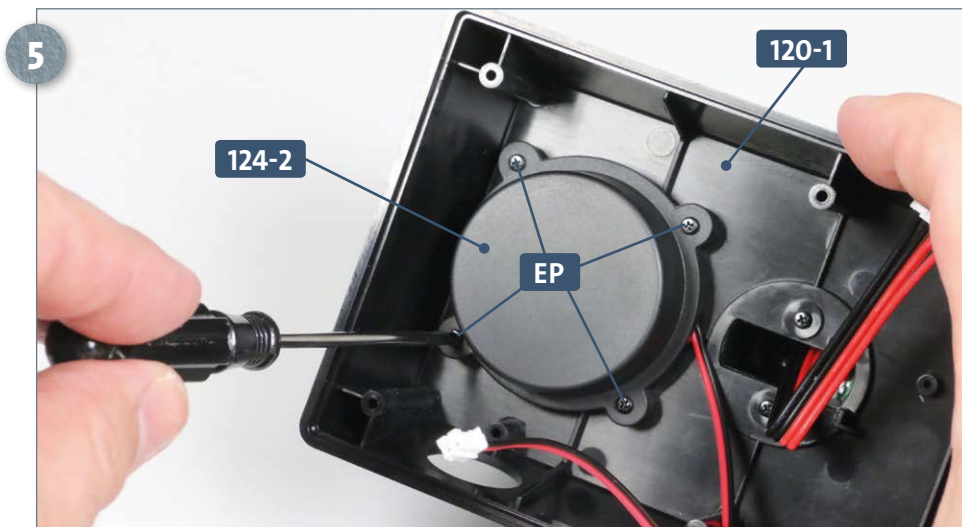


Place the aft stand **120-1** upside down on your work surface. Fit the speaker **124-1** into the perforated, ribbed area of the stand, as pictured.

Kit 124: Model stand (V)



Place the bracket **124-2** over the speaker **124-1**, positioning its four tabs over the screw holes in the body of the stand **120-1**. Make sure that the speaker cable is routed through the recess in the bracket, which is indicated by the arrow.



Attach the bracket to the stand with four **EP** screws, as shown.

COMPLETED WORK



The speaker has now been installed in the aft part of the stand.