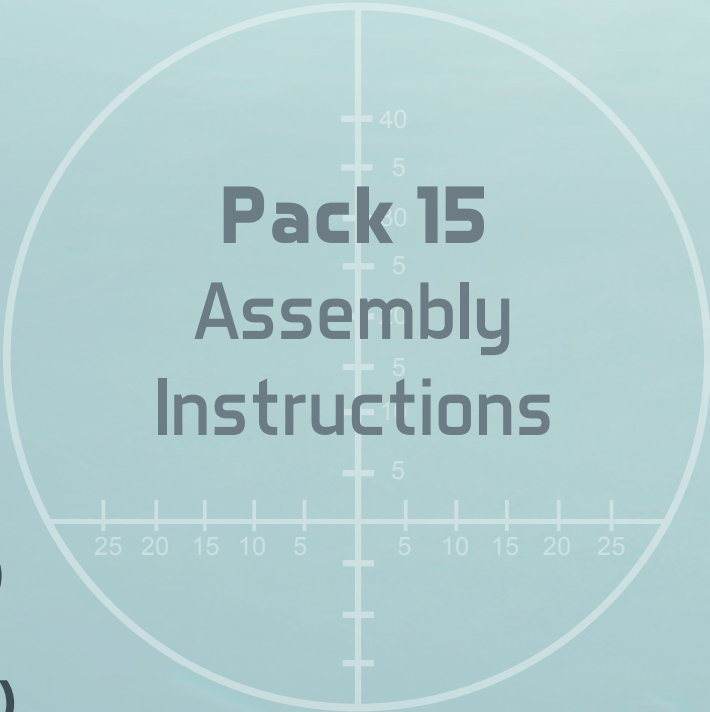


U 96

U-BOAT



Pack 15

Assembly Instructions

Kit 57: Aft battery compartment (I)

Kit 58: Aft battery compartment (II)

Kit 59: Aft battery compartment (III)

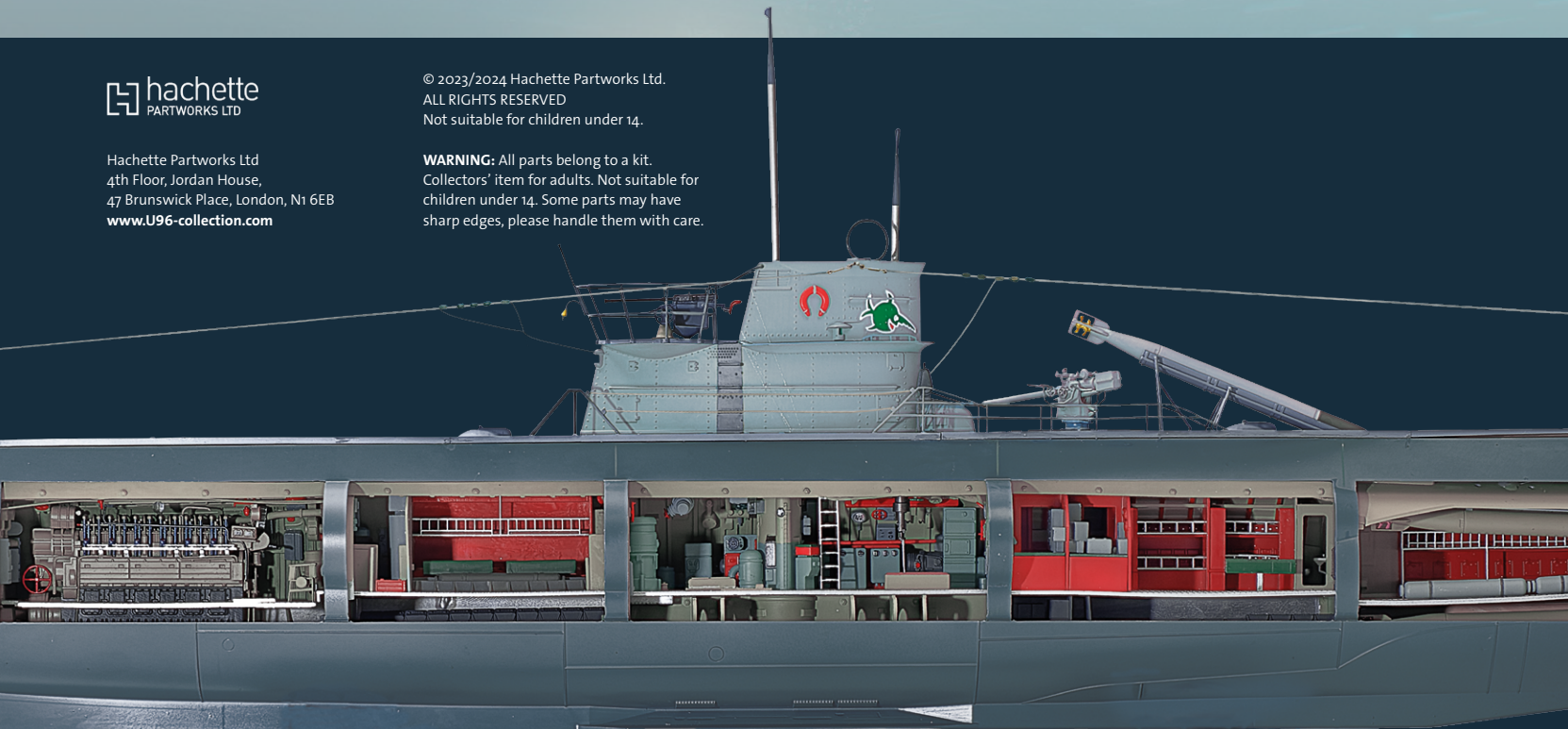
Kit 60: Non-commissioned officers' compartment (VI)

 **hachette**
PARTWORKS LTD

Hachette Partworks Ltd
4th Floor, Jordan House,
47 Brunswick Place, London, N1 6EB
www.U96-collection.com

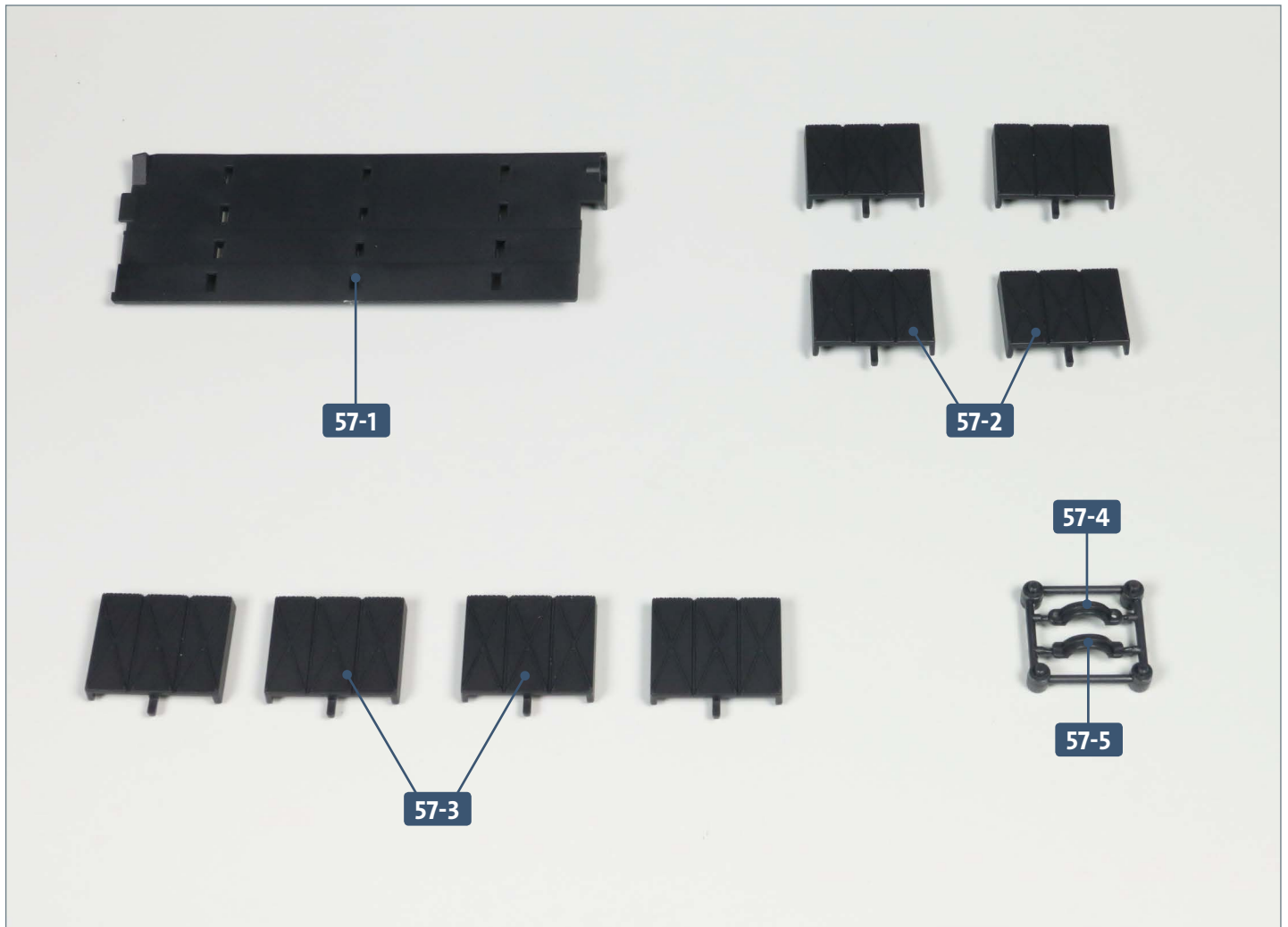
© 2023/2024 Hachette Partworks Ltd.
ALL RIGHTS RESERVED
Not suitable for children under 14.

WARNING: All parts belong to a kit.
Collectors' item for adults. Not suitable for
children under 14. Some parts may have
sharp edges, please handle them with care.



Kit 57: Aft battery compartment (I)

In this kit, you will begin work on the aft battery compartment, which will be located underneath the NCOs' bunk room. You will also attach a sealing ring to the attack periscope.



Parts reference list

Part no.	Name
57-1	Installation rail for aft battery compartment
57-2	Battery cells (left half) x 4
57-3	Battery cells (right half) x 4
57-4	Attack periscope sealing ring
57-5	Attack periscope sealing ring

Kit 57: Aft battery compartment (I)

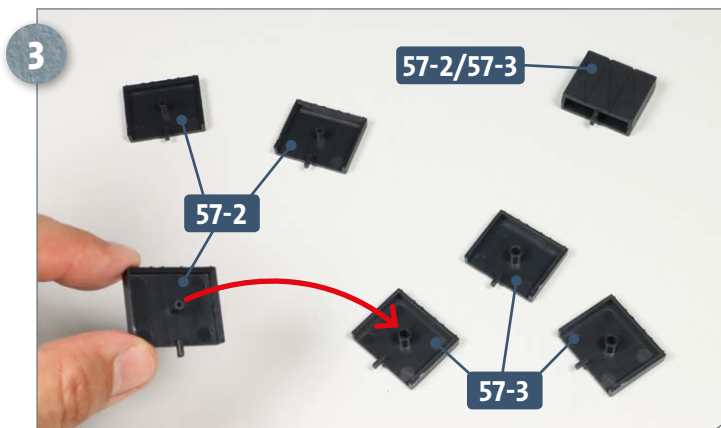
STAGE 1 → Assembly and addition of the first battery cells



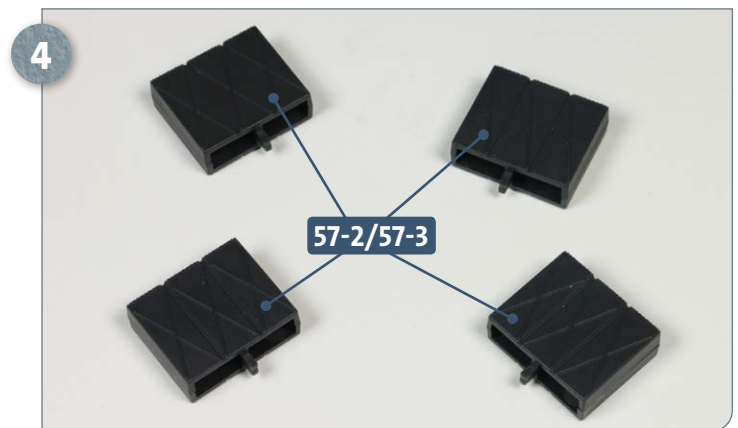
Place the battery cell halves **57-2** and **57-3** on your work surface, their inner sides facing up. Apply some glue to the peg of **57-2** as shown above.



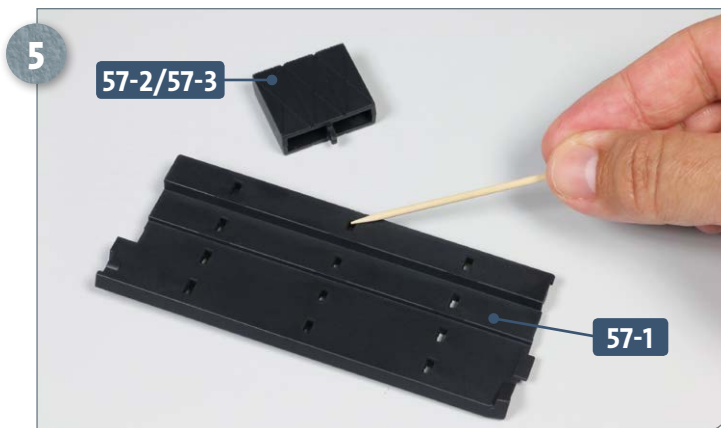
Place the two halves of the cell together, pressing the peg of **57-2** into the socket of **57-3**.



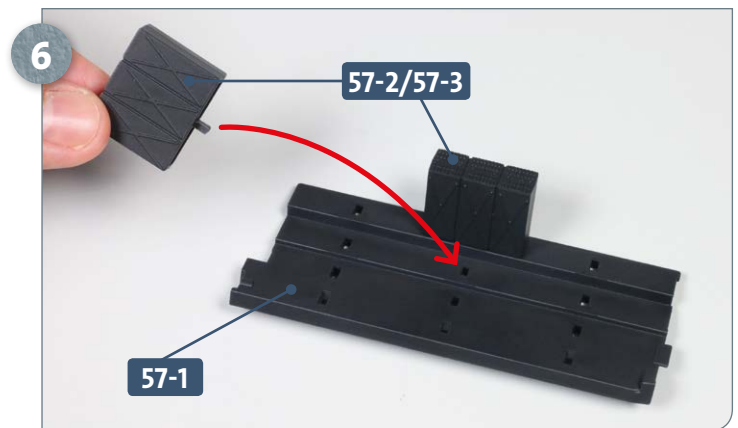
Prepare three more pairs of battery cell halves **57-2** and **57-3**. For each pair, apply some glue to the peg of **57-2** and fit this inside the socket of a corresponding **57-3**, as indicated by the arrow.



This photograph shows the resulting four battery cells, each made up of paired halves **57-2** and **57-3**.

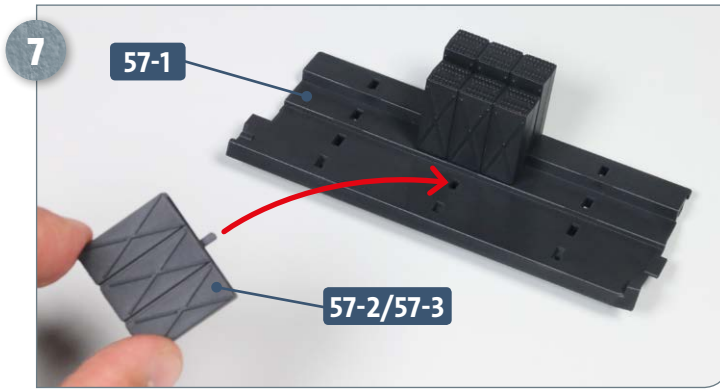


Place the installation rail **57-1** on your work surface as shown. Apply some glue to the slot where the cocktail stick is pointing in the photograph above.

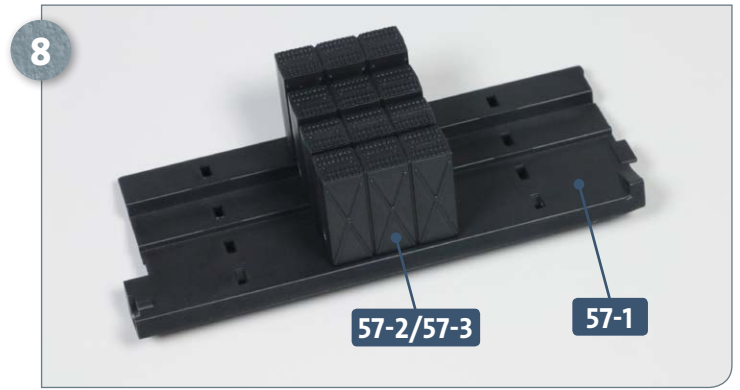


Fit one of the battery cells **57-2/57-3** by inserting the lower tab into the glued slot in the installation rail **57-1**. The next battery cell is glued in the adjacent opening, as indicated by the arrow.

Kit 57: Aft battery compartment (I)

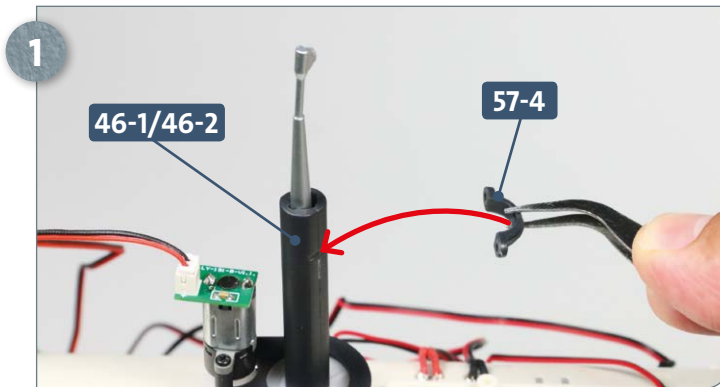


The third battery cell **57-2/57-3** is glued to the installation rail **57-1** next to the second, into the slot indicated by the arrow above.

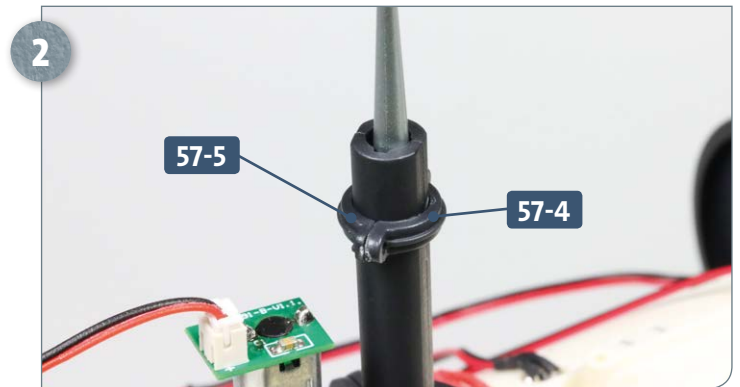


The row of battery cells **57-2/57-3** is completed by gluing the fourth into the remaining slot at the front of the installation rail **57-1** as shown.

STAGE 2 → Attaching the sealing ring

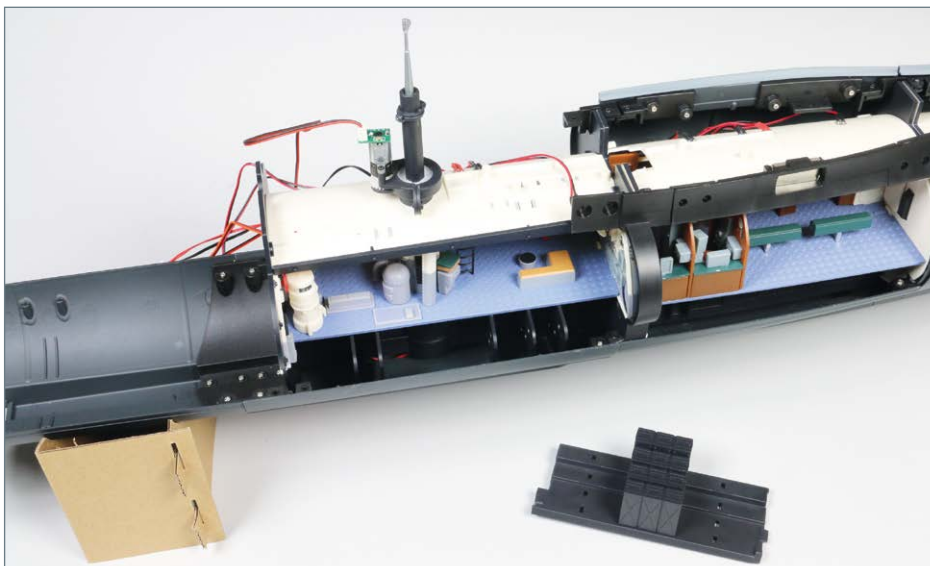


Separate the first half of the sealing ring **57-4** from the frame. Fit it onto the recess in the periscope shaft **46-1/46-2**.



Apply some glue to the two pegs of the second half of the ring **57-5** before attaching it to the other half **57-4**.

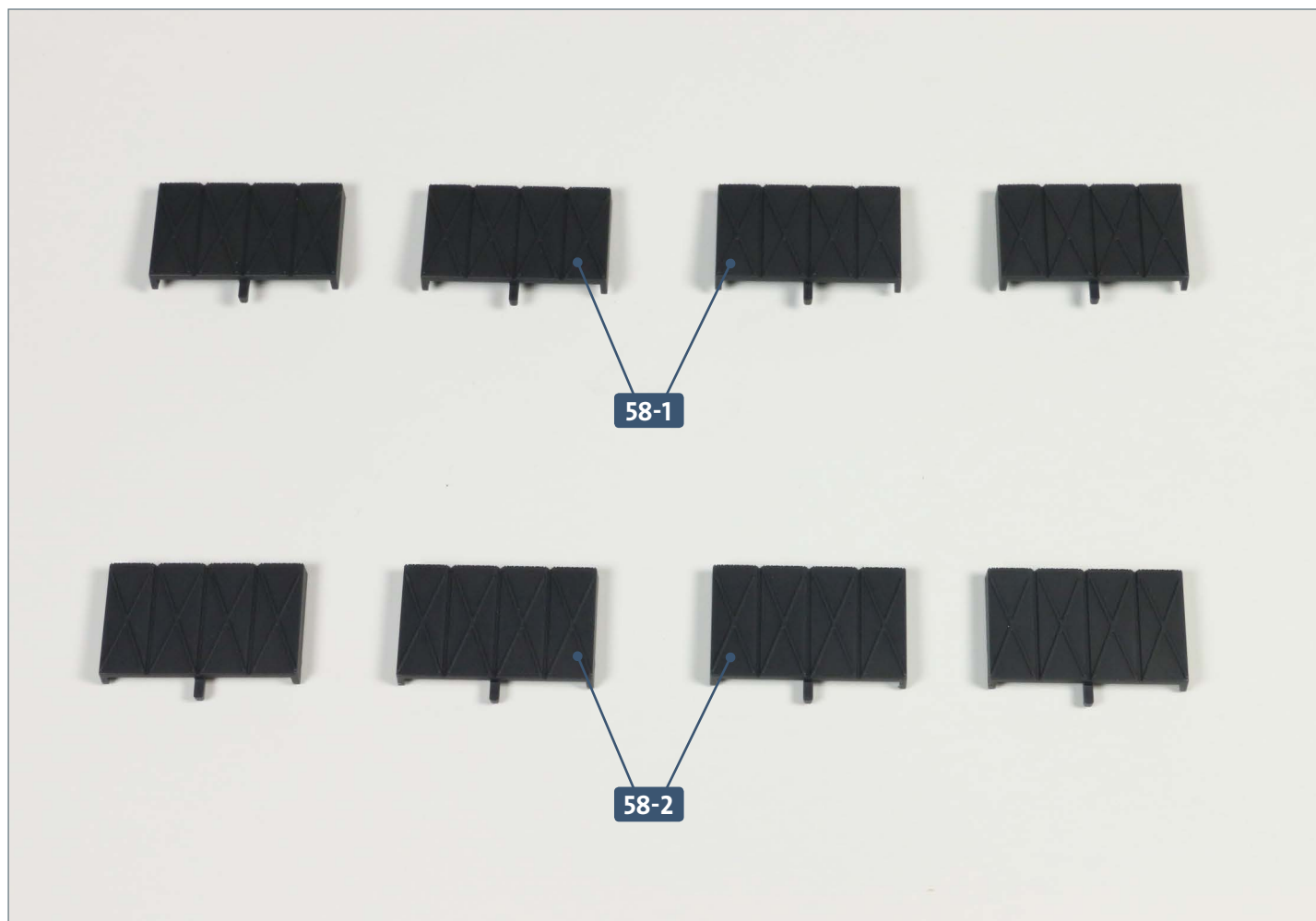
COMPLETED WORK



Assembly of the aft battery compartment has begun and a sealing ring has been added to the attack periscope.

Kit 58: Aft battery compartment (II)

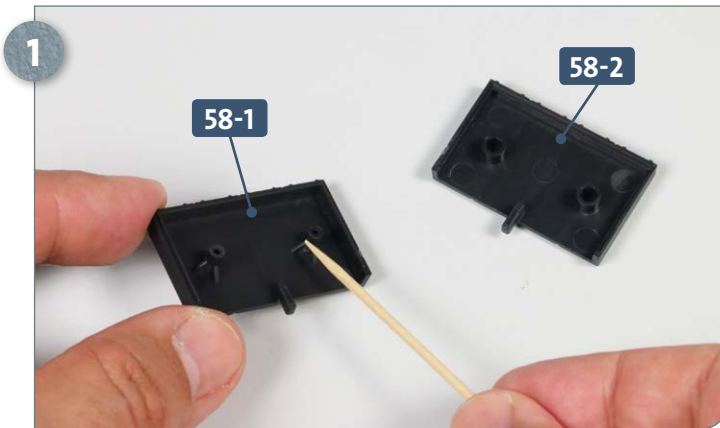
In this kit, you will continue work on the aft battery compartment, assembling the next four battery cells and attaching them to the installation rail.



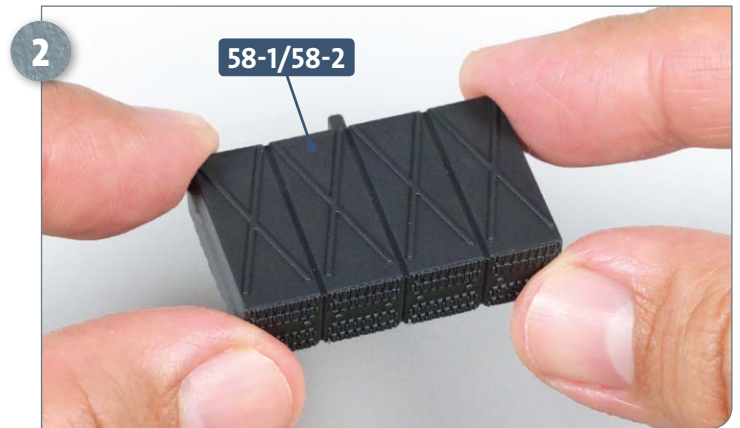
Parts reference list	
Part no.	Name
58-1	Battery cells (left half) x 4
58-2	Battery cells (right half) x 4

Note: Testing of the electronics and mechanics of the third compartment (command centre and periscope) will happen in kit 64.

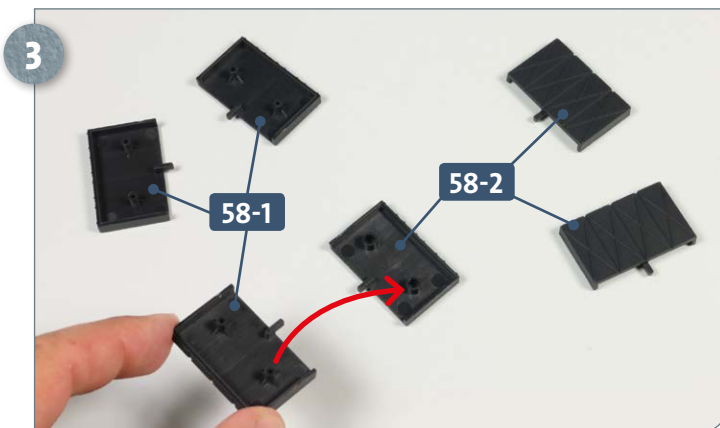
STAGE 1 → Assembly and installation of battery cells



Place one each of battery halves **58-1** and **58-2** on your work surface, inner sides facing up. Apply some glue to the pegs of **58-1** as shown.



Press the two halves of the battery cell together, fitting the glued pegs of **58-1** inside the sockets of **58-2**.



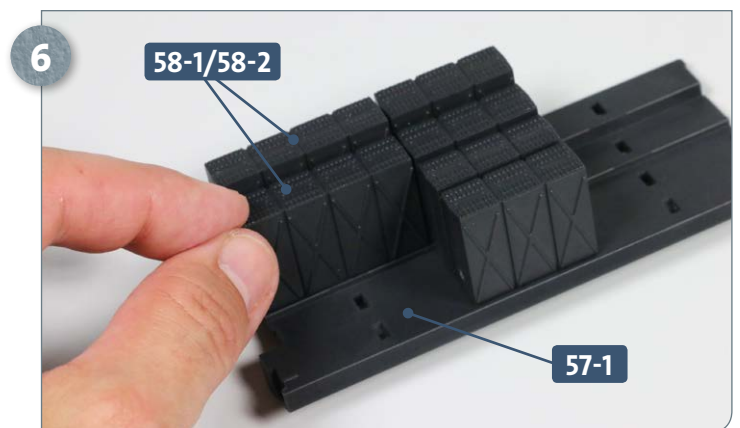
Prepare three more pairs of battery cell halves **58-1** and **58-2**. For each pair, apply some glue to the pegs of **58-1** before fitting them into the sockets of a corresponding **58-2**, as indicated by the arrow in the photograph above.



This photograph shows the resulting battery cells, each consisting of paired halves **58-1** and **58-2**.



Take one of the battery cells **58-1/58-2** and the installation rail **57-1**, oriented as shown. Add some glue inside the slot indicated by the cocktail stick in the image above.



Fit the lower tab of the battery cell **58-1/58-2** inside the glued slot in the installation rail **57-1**. The next battery cell is glued into the adjacent slot, as shown.

Kit 58: Aft battery compartment (II)



Glue one of the two remaining battery cells **58-1/58-2** next to the previously fitted cell on the installation rail **57-1**, into the slot indicated by the arrow.



The final battery cell **58-1/58-2** is glued into the final, front slot of the installation rail **57-1**, as indicated by the arrow.

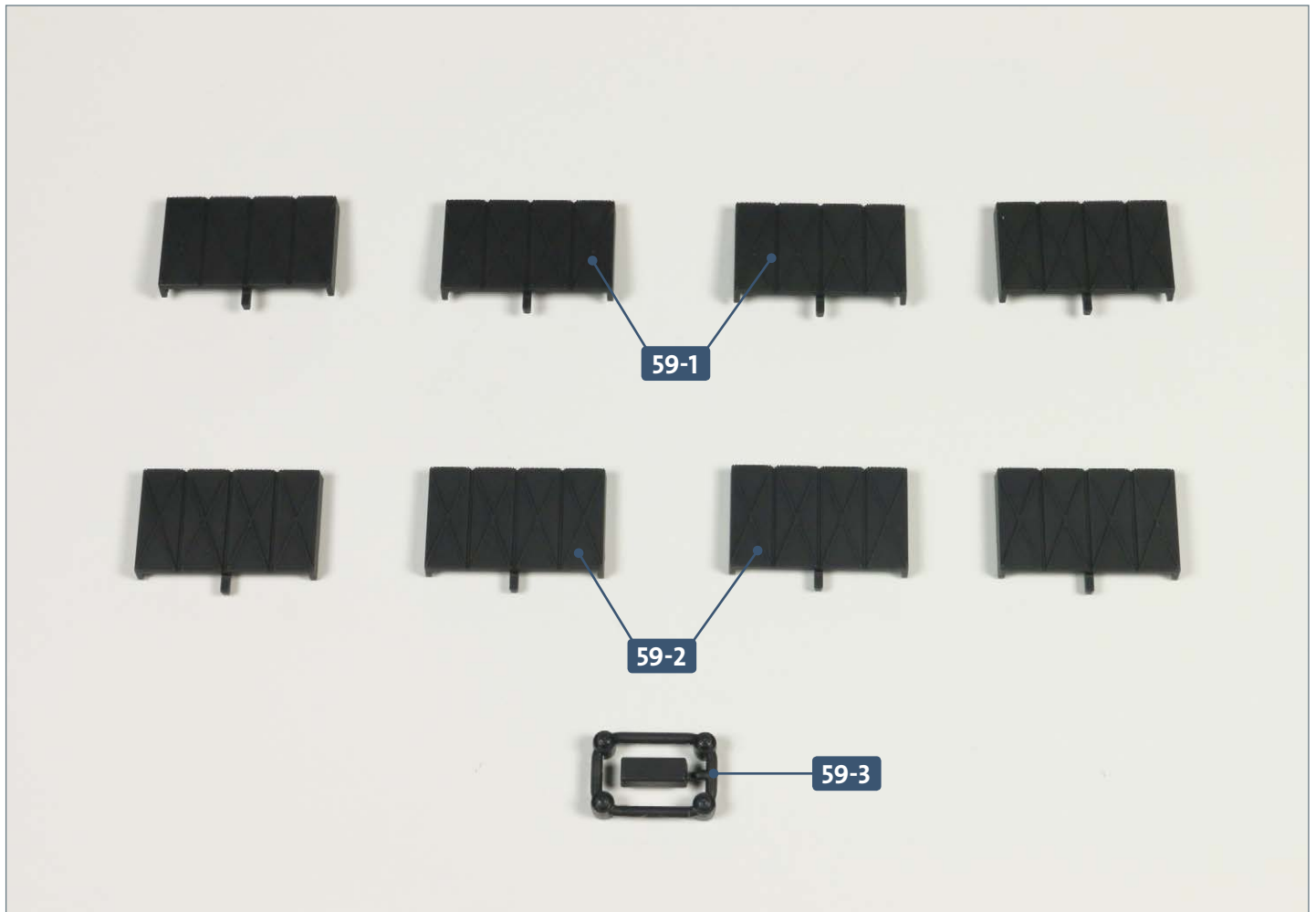
COMPLETED WORK



Four more battery cells have now been added to the aft battery compartment.

Kit 59: Aft battery compartment (III)

In this kit, work on the aft battery compartment is completed with the assembly and installation of the final four battery cells. An attachment is also added to the fourth compartment bulkhead.

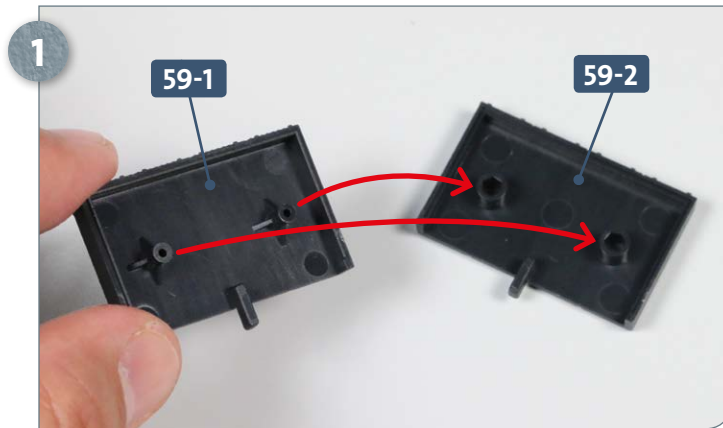


Parts reference list

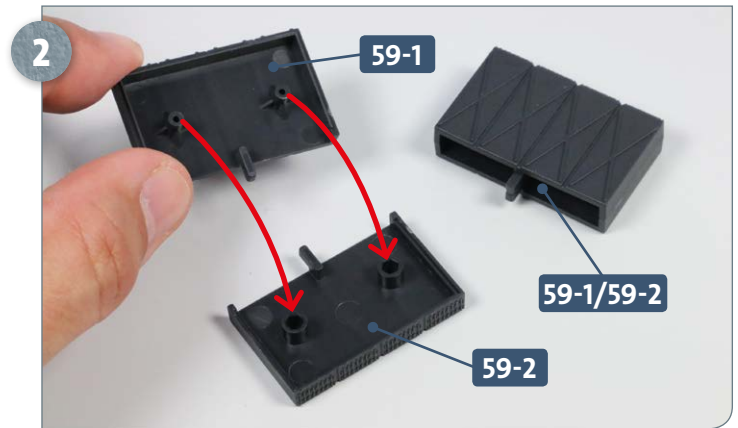
Part no.	Name
59-1	Battery cell (left half) x 4
59-2	Battery cell (right half) x 4
59-3	Attachment

Kit 59: Aft battery compartment (III)

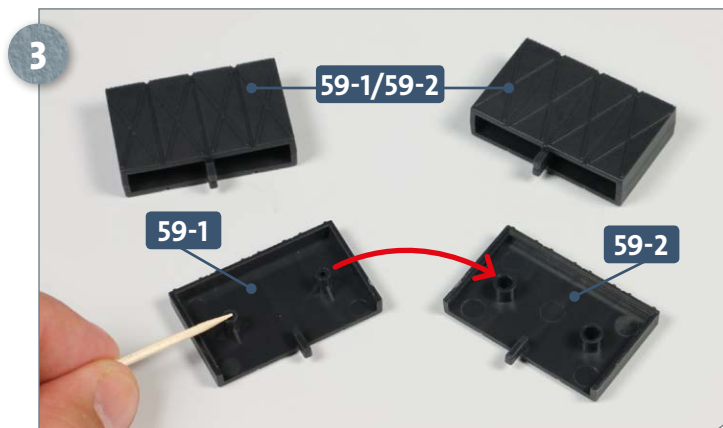
STAGE 1 → Assembly and installation of the final battery cells



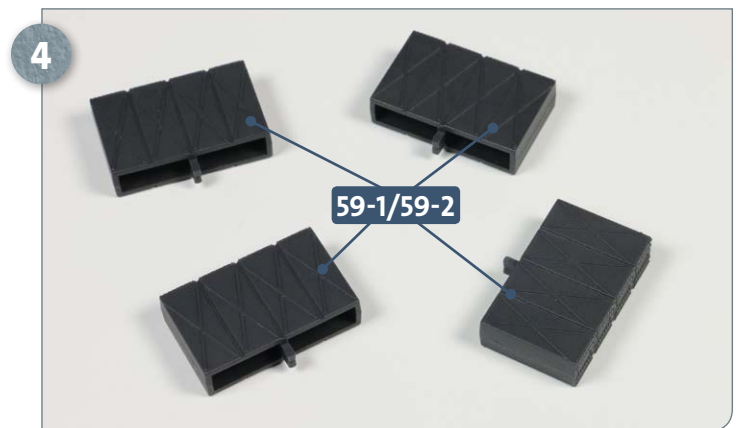
Take one each of battery cell halves **59-1** and **59-2**. Apply some glue to the pegs of **59-1** and fit these into the corresponding sockets in **59-2**, as indicated by the arrows.



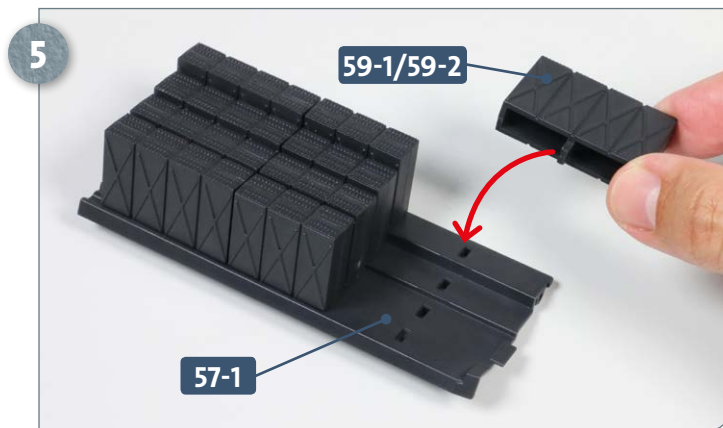
The first battery cell **59-1/59-2** is complete. Take another pair of halves **59-1** and **59-2**, apply glue to the pegs of **59-1** and fit these into the sockets of **59-2**, as indicated by the arrows.



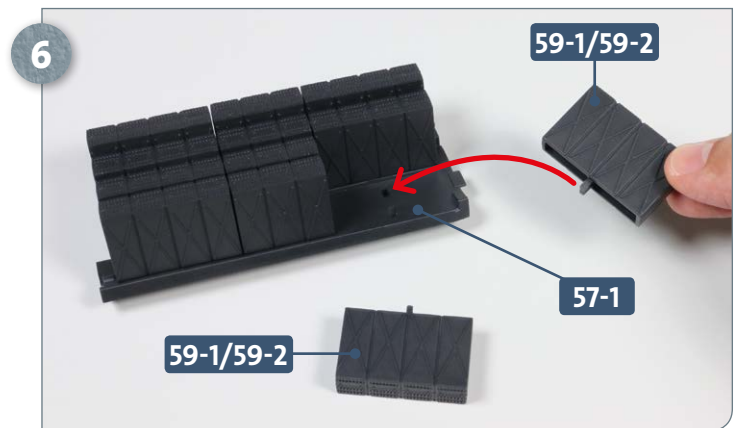
Repeat the process for the third pair of halves **59-1** and **59-2**, as shown above.



Make the final battery cell from the remaining pairs of parts **59-1** and **59-2**. The photo shows the four completed battery cells.



Place the installation rail **57-1** on your work surface. Take one of the battery cells **59-1/59-2**, apply some glue to the tab on the bottom, and insert the glued tab into the first slot in the rail, as indicated by the arrow.



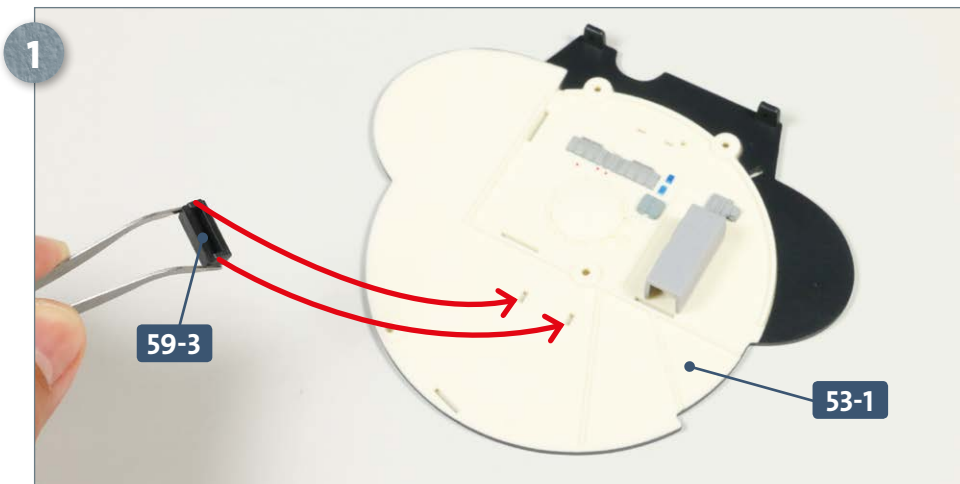
The second battery cell **59-1/59-2** is glued into the adjacent slot in the installation rail **57-1**. Repeat the process with the third battery cell **59-1/59-2**, gluing the tab and inserting it into the next slot as shown by the arrow.

Kit 59: Aft battery compartment (III)



Finally, glue the tab on the bottom of the fourth battery cell 59-1/59-2 into the remaining slot at the front of the installation rail 57-1.

STAGE 2 → Adding the attachment



Place the fourth compartment forward bulkhead 53-1 on your work surface. Take attachment 59-3, apply some glue to both pegs, and insert these into the slots in the bulkhead indicated by the two arrows.

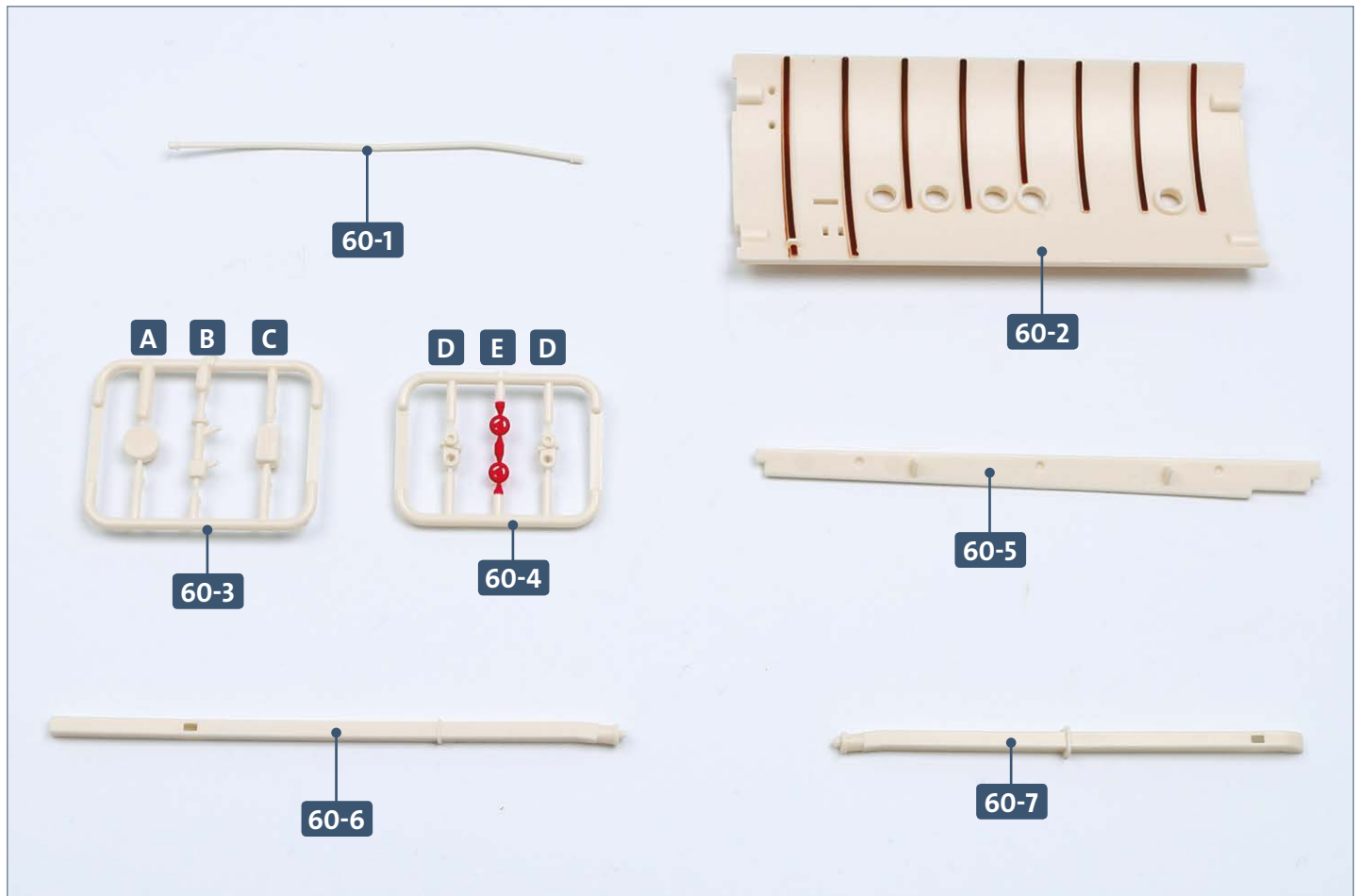
COMPLETED WORK



The aft battery compartment is now complete, and an attachment has been added to the forward bulkhead of the fourth compartment.

Kit 60: Non-commissioned officers' compartment (VI)

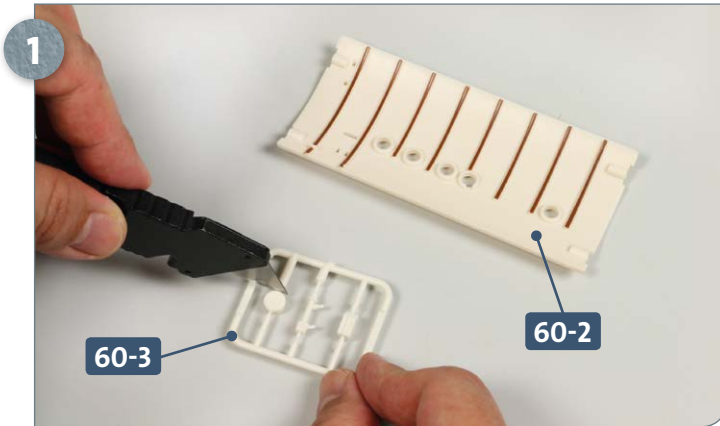
In this kit, several parts are attached to the deckhead panel of the fourth compartment, and two ventilation pipes are equipped with gate valves.



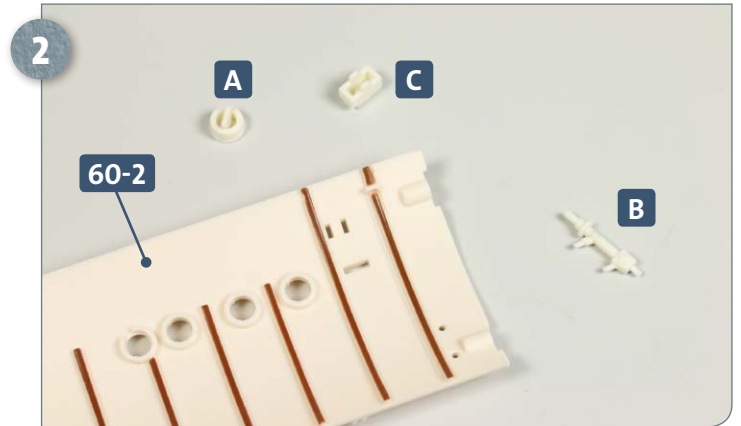
Parts reference list

Part no.	Name
60-1	Linkage
60-2	Fourth compartment deckhead panel
60-3	Frame (A, B, C)
60-4	Frame (2 x D, 2 x E)
60-5	Cover
60-6	Ventilation pipe (exhaust)
60-7	Ventilation pipe (air supply)

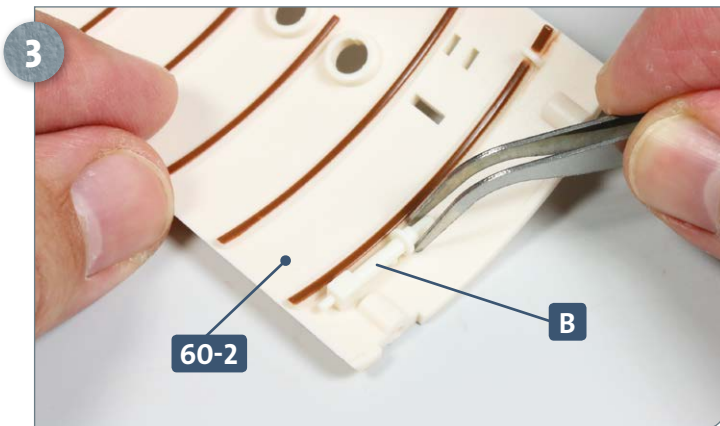
STAGE 1 → The deckhead and ventilation pipes



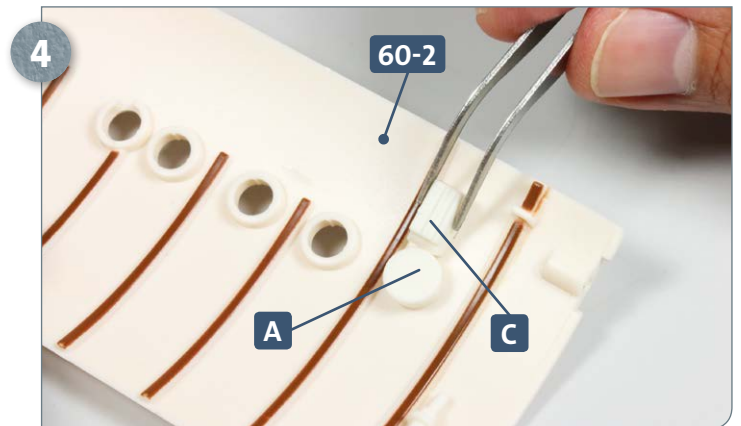
Place the deckhead panel **60-2** on your work surface. Take frame **60-3** and detach all three parts from it.



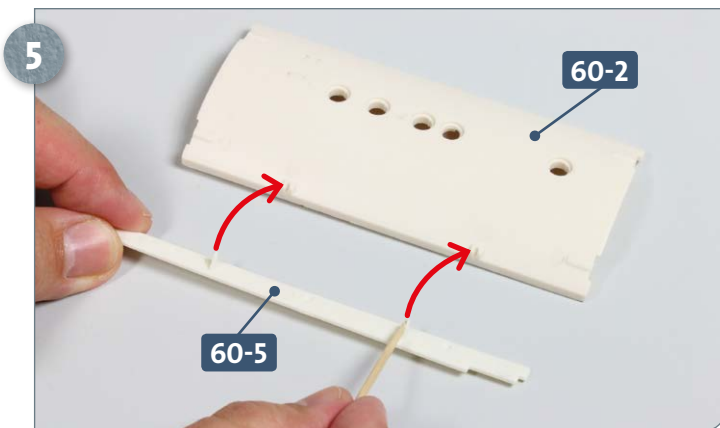
Lay the three parts removed from the frame **A**, **B** (ventilation pipe) and **C** (fuse box) near the aft end of the deckhead panel **60-2**, as shown above.



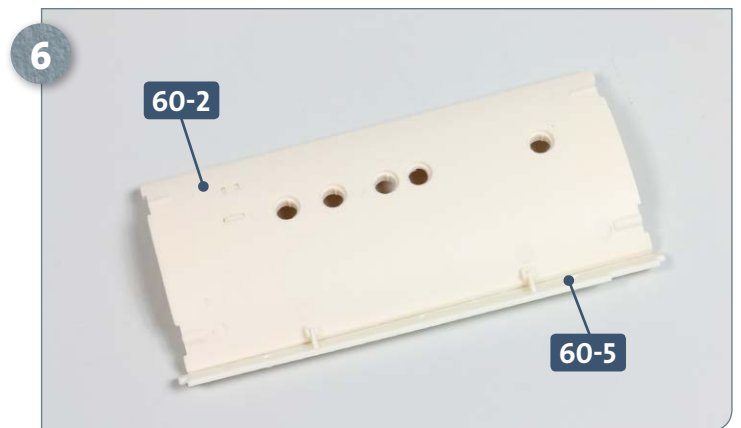
Apply a little glue to each of the pegs of part **B** and fix it to the deckhead panel **60-2**.



Similarly, add some glue to the pegs of parts **A** and **C** and fit them to the corresponding holes in the deckhead **60-2**, as shown above.

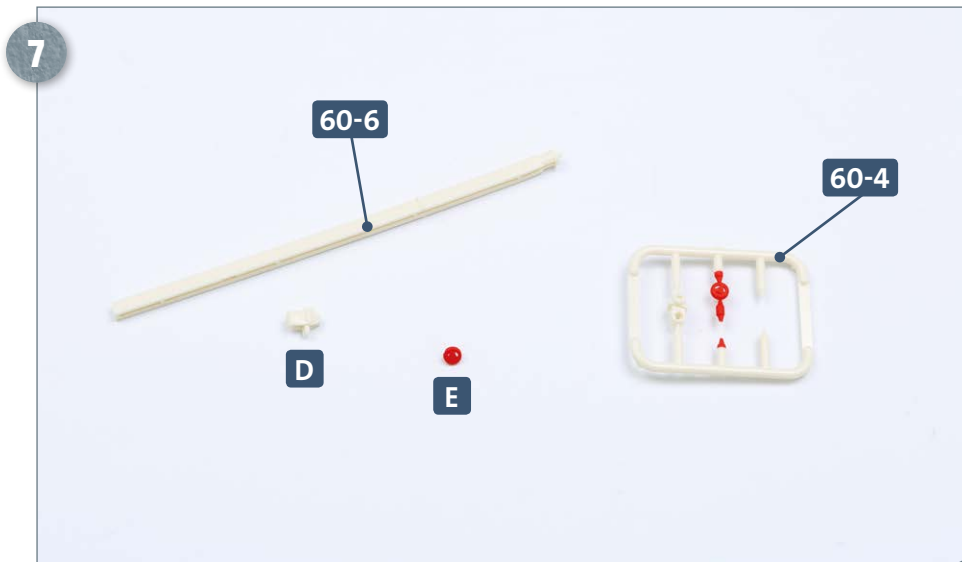


Turn the deckhead panel **60-2** over. Taking the cover **60-5**, apply some glue to its two tabs. Insert these into the slots indicated by the arrows.

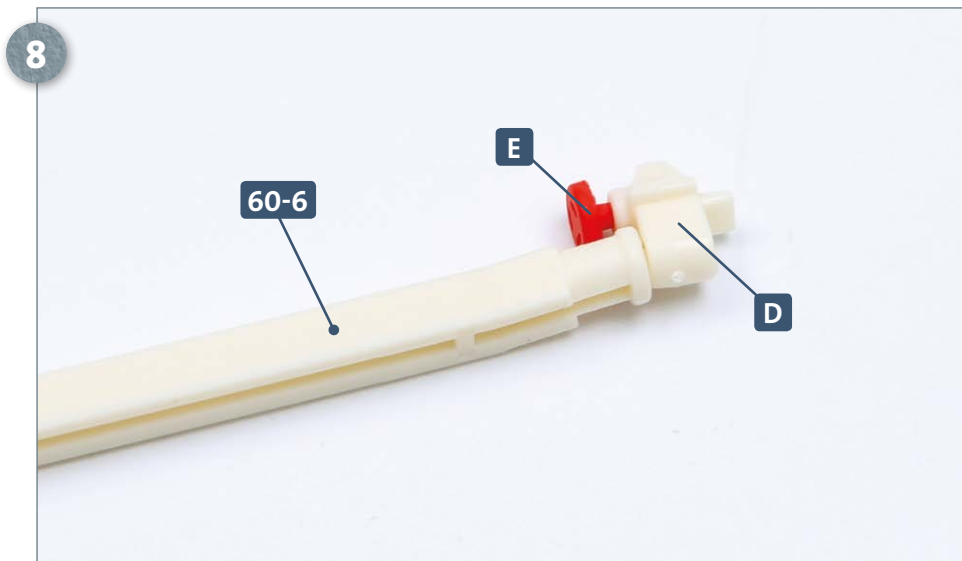


This photo shows the cover **60-5** attached to the deckhead **60-2**.

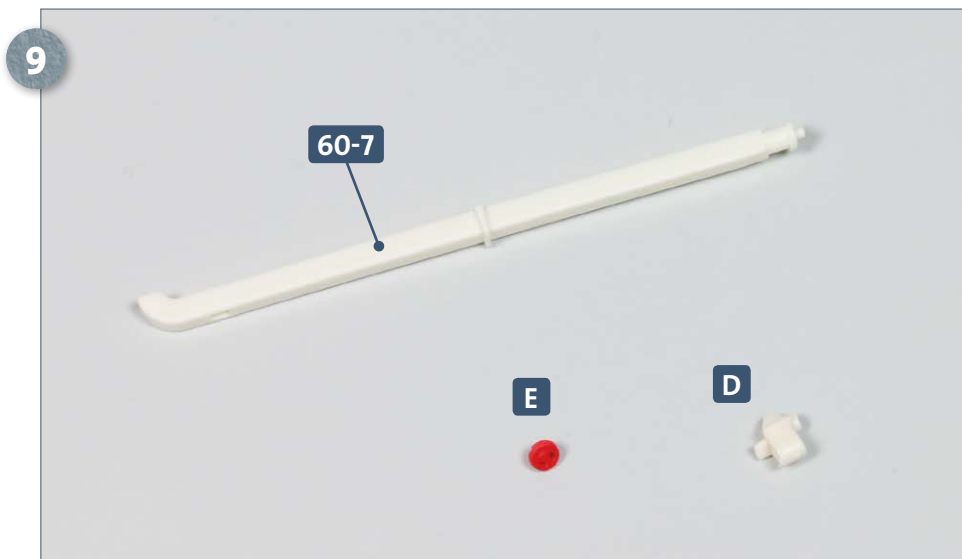
Kit 60: Non-commissioned officers' compartment (VI)



Place the ventilation pipe **60-6** on your work surface, oriented as shown. Take frame **60-4** and detach one gate valve **D** and one handwheel **E** from it.



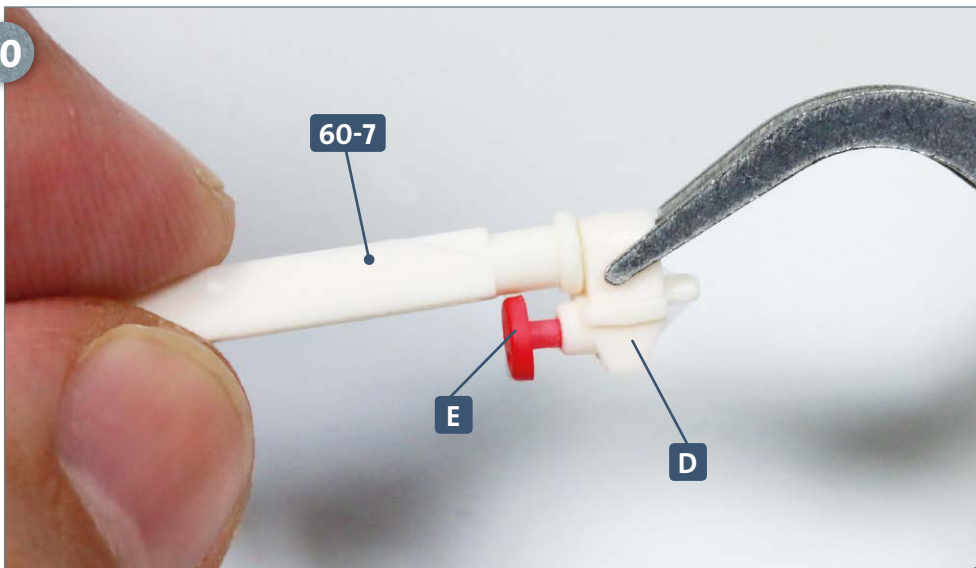
Apply some glue to the base of the handwheel **E** and insert it into the small hole in the gate valve **D**. Then, glue the large hole of **D** onto the peg of the ventilation pipe **60-6**, as shown.



Repeat the process with ventilation pipe **60-7** and the remaining parts **D** and **E** from frame **60-4**. Orient the pipe as shown in the photograph, left.

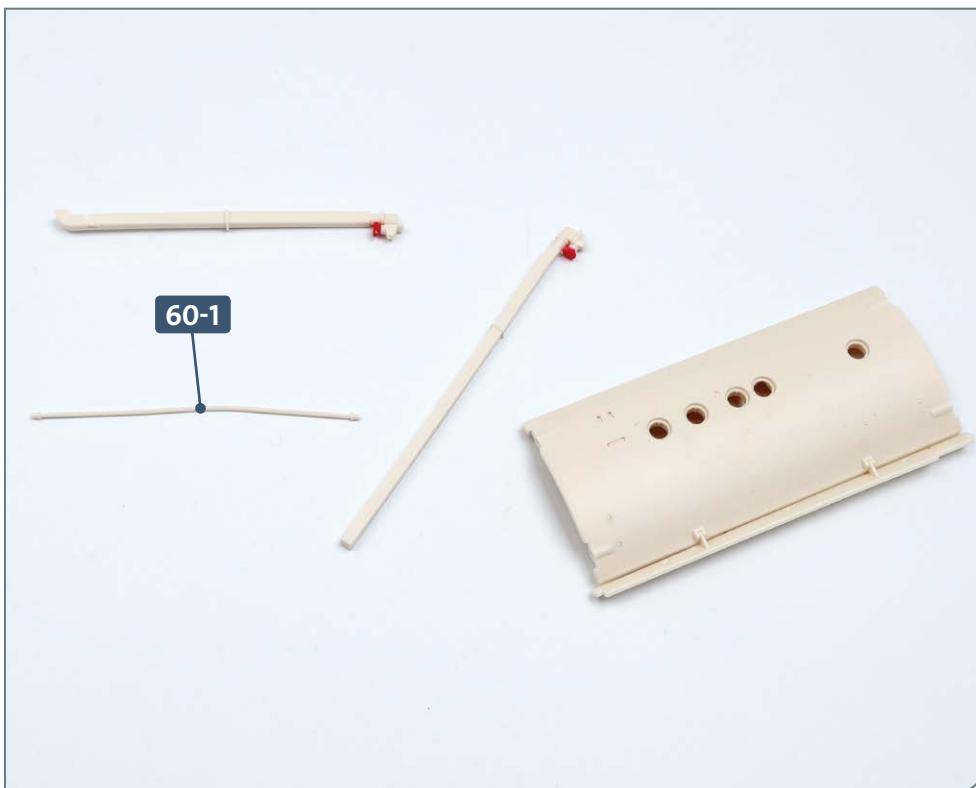
Kit 60: Non-commissioned officers' compartment (VI)

10



First glue the handwheel **E** to the gate valve **D**. Then glue the large hole of **D** onto the peg of the ventilation pipe **60-7**. Check the orientation using the Completed Work photograph.

COMPLETED WORK



Three components have been mounted on the deckhead panel of the fourth compartment, and two ventilation pipes have been prepared for future installation. Keep part **60-1** somewhere safe; it will be added in a future kit.